



U.S. Department of the Interior
Bureau of Land Management

March 2024

Greater Sage-Grouse

Volume 2: Appendix 1. Maps

Part 3: Maps 2.20 — 2.31

Draft Resource Management Plan Amendment and Environmental Impact Statement



The Bureau of Land Management's multiple-use mission is to sustain the health and productivity of the public lands for the use and enjoyment of present and future generations. The Bureau accomplishes this by managing such activities as outdoor recreation, livestock grazing, mineral development, and energy production, and by conserving natural, historical, cultural, and other resources on public lands.

Cover Photo: Steve Ting

Lower Bar Photos (L to R):

US Fish and Wildlife, Rachel Woita, James Yule

Appendix I

Maps

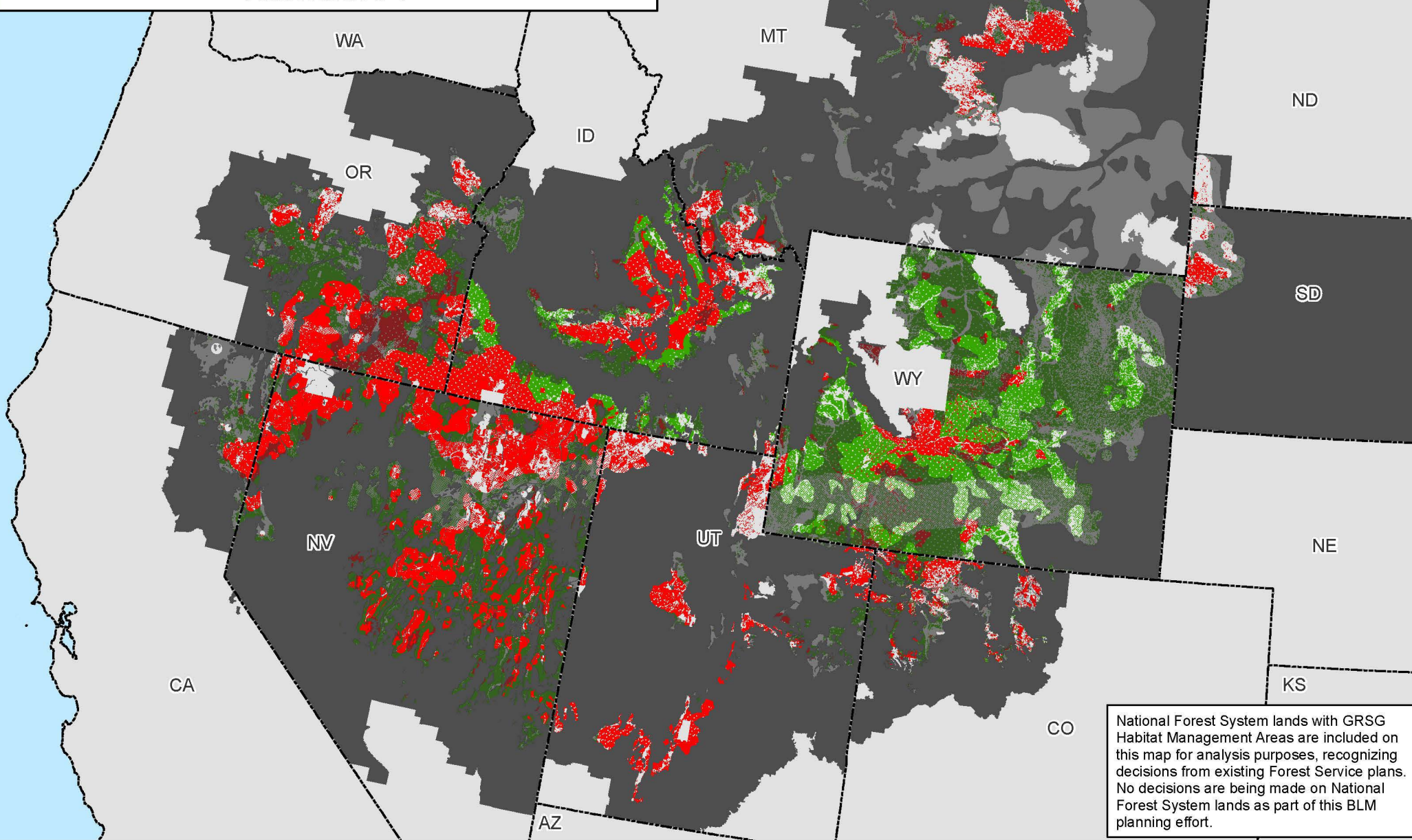
This page intentionally left blank.

Appendix I. Maps

- I.1 Greater Sage-Grouse West-Wide Planning Area
- 2.1 Greater Sage-Grouse Habitat Management Areas, Alternative 1
- 2.2 Greater Sage-Grouse Habitat Management Areas, Alternative 2
- 2.3 Greater Sage-Grouse Habitat Management Areas, Alternative 3
- 2.4 Greater Sage-Grouse Habitat Management Areas, Alternative 4
- 2.5 Greater Sage-Grouse Habitat Management Areas, Alternative 5
- 2.6 Greater Sage-Grouse Habitat Management Areas, Alternative 6
- 2.7 Greater Sage-Grouse Biologically Significant Units, Alternative 2
- 2.8 Fluid Minerals (Oil and Gas), Alternative 1
- 2.9 Fluid Minerals (Oil and Gas), Alternative 2
- 2.10 Fluid Minerals (Oil and Gas), Alternative 3
- 2.11 Fluid Minerals (Oil and Gas), Alternative 4
- 2.12 Fluid Minerals (Oil and Gas), Alternative 5
- 2.13 Fluid Minerals (Oil and Gas), Alternative 6
- 2.14 Geothermal, Alternative 1
- 2.15 Geothermal, Alternative 2
- 2.16 Geothermal, Alternative 3
- 2.17 Geothermal, Alternative 4
- 2.18 Geothermal, Alternative 5
- 2.19 Geothermal, Alternative 6
- 2.20 Non-Energy Leasable Minerals, Alternative 1
- 2.21 Non-Energy Leasable Minerals, Alternative 2
- 2.22 Non-Energy Leasable Minerals, Alternative 3
- 2.23 Non-Energy Leasable Minerals, Alternative 4
- 2.24 Non-Energy Leasable Minerals, Alternative 5
- 2.25 Non-Energy Leasable Minerals, Alternative 6
- 2.26 Salable (Mineral Materials), Alternative 1
- 2.27 Salable (Mineral Materials), Alternative 2
- 2.28 Salable (Mineral Materials), Alternative 3
- 2.29 Salable (Mineral Materials), Alternative 4
- 2.30 Salable (Mineral Materials), Alternative 5
- 2.31 Salable (Mineral Materials), Alternative 6
- 2.32 Locatable Minerals, Alternative 1
- 2.33 Locatable Minerals, Alternative 2
- 2.34 Locatable Minerals, Alternative 3
- 2.35 Locatable Minerals, Alternative 4
- 2.36 Locatable Minerals, Alternative 5
- 2.37 Locatable Minerals, Alternative 6
- 2.38 Major Rights-of-Way, Alternative 1
- 2.39 Major Rights-of-Way, Alternative 2
- 2.40 Major Rights-of-Way, Alternative 3
- 2.41 Major Rights-of-Way, Alternative 4
- 2.42 Major Rights-of-Way, Alternative 5
- 2.43 Major Rights-of-Way, Alternative 6
- 2.44 Wind Energy Management, Alternative 1

- 2.45 Wind Energy Management, Alternative 2
- 2.46 Wind Energy Management, Alternative 3
- 2.47 Wind Energy Management, Alternative 4
- 2.48 Wind Energy Management, Alternative 5
- 2.49 Wind Energy Management, Alternative 6
- 2.50 Solar Energy Management, Alternative 1
- 2.51 Solar Energy Management, Alternative 2
- 2.52 Solar Energy Management, Alternative 3
- 2.53 Solar Energy Management, Alternative 4
- 2.54 Solar Energy Management, Alternative 5
- 2.55 Solar Energy Management, Alternative 6
- 2.56 Designated Utility Corridors, Alternative 1
- 2.57 Designated Utility Corridors, Alternative 2
- 2.58 Designated Utility Corridors, Alternative 3
- 2.59 Designated Utility Corridors, Alternative 4
- 2.60 Designated Utility Corridors, Alternative 5
- 2.61 Designated Utility Corridors, Alternative 6
- 3.1 Greater Sage-Grouse Breeding Population Index Model
- 3.2 Average Annual Rate of Change in Greater Sage-Grouse Abundance
- 3.3 Watch and Warning Signals for Greater Sage-Grouse Population Declines, 1995-2019
- 3.4 Distinct Genetic Greater Sage-Grouse Groups
- 3.5 Greater Sage-Grouse Genetic Connectivity
- 3.6 Greater Sage-Grouse Population Clusters Declining in Genetic Diversity
- 3.7 Greater Sage-Grouse Habitat Assessment Framework, Mid-Scale Areas (Level 2)
- 3.8 Greater Sage-Grouse Habitat Assessment Framework, Fine-Scale Areas (Level 3)
- 3.9 Greater Sage-Grouse Breeding Habitat Model
- 3.10 Probability of Greater Sage-Grouse Lek Persistence
- 3.11 Modeled Potential Change in Sagebrush Biomass (2030-2060)
- 3.12 Modeled Potential Change in Sagebrush Cover (2011-2040)
- 3.13 Vegetation Communities
- 3.14 Conifer Canopy Cover
- 3.15 Acres Burned Over the Past 10 Years (2012-2022)
- 3.16 Existing Disturbances
- 3.17 Wind Potential
- 3.18 Existing Oil and Gas Leases
- 3.19 Oil and Gas Occurrence Potential
- 3.20 Existing Geothermal Leases
- 3.21 Geothermal Potential
- 3.22 BLM National Landscape Conservation System (NLCS), Other Related Lands
- 3.23 Wild Horse and Burro Herd Management Areas

Non-Energy Leasable Minerals and Greater Sage-Grouse Habitat Management Areas Alternative 1



National Forest System lands with GRSG Habitat Management Areas are included on this map for analysis purposes, recognizing decisions from existing Forest Service plans. No decisions are being made on National Forest System lands as part of this BLM planning effort.

Map 2.20a

PHMAs / IHMAs

GHMAs / Add'l HMAs

Non-Shaded Areas: PHMAs/IHMAs

Shaded Areas: GHMAs/Additional Habitat Mgmt Areas

Non-Energy Leasable Minerals - Closed

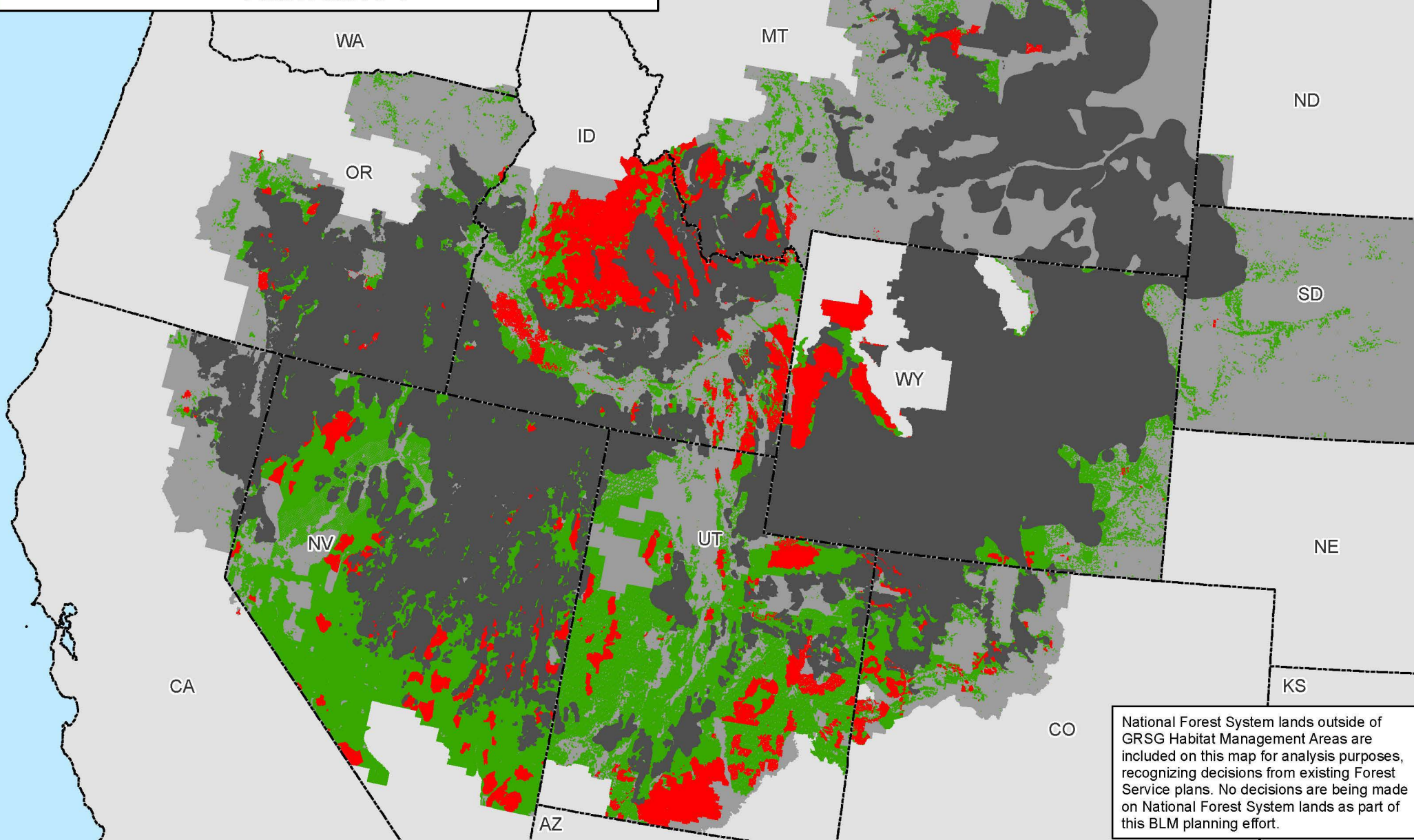
Non-Energy Leasable Minerals - Open

Non-Habitat Management Areas in the Planning Area Extent

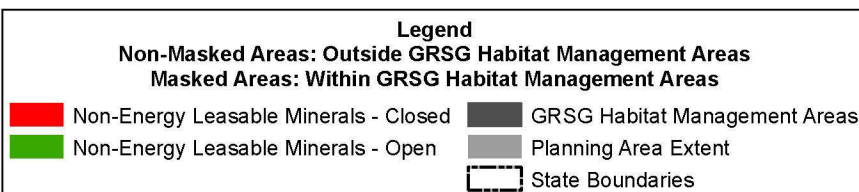
State Boundaries

No warranty is made by the Bureau of Land Management (BLM). The accuracy, reliability, or completeness of these data for individual use or aggregate use with other data is not guaranteed.

Non-Energy Leasable Minerals Outside of Greater Sage-Grouse Habitat Management Areas Alternative 1



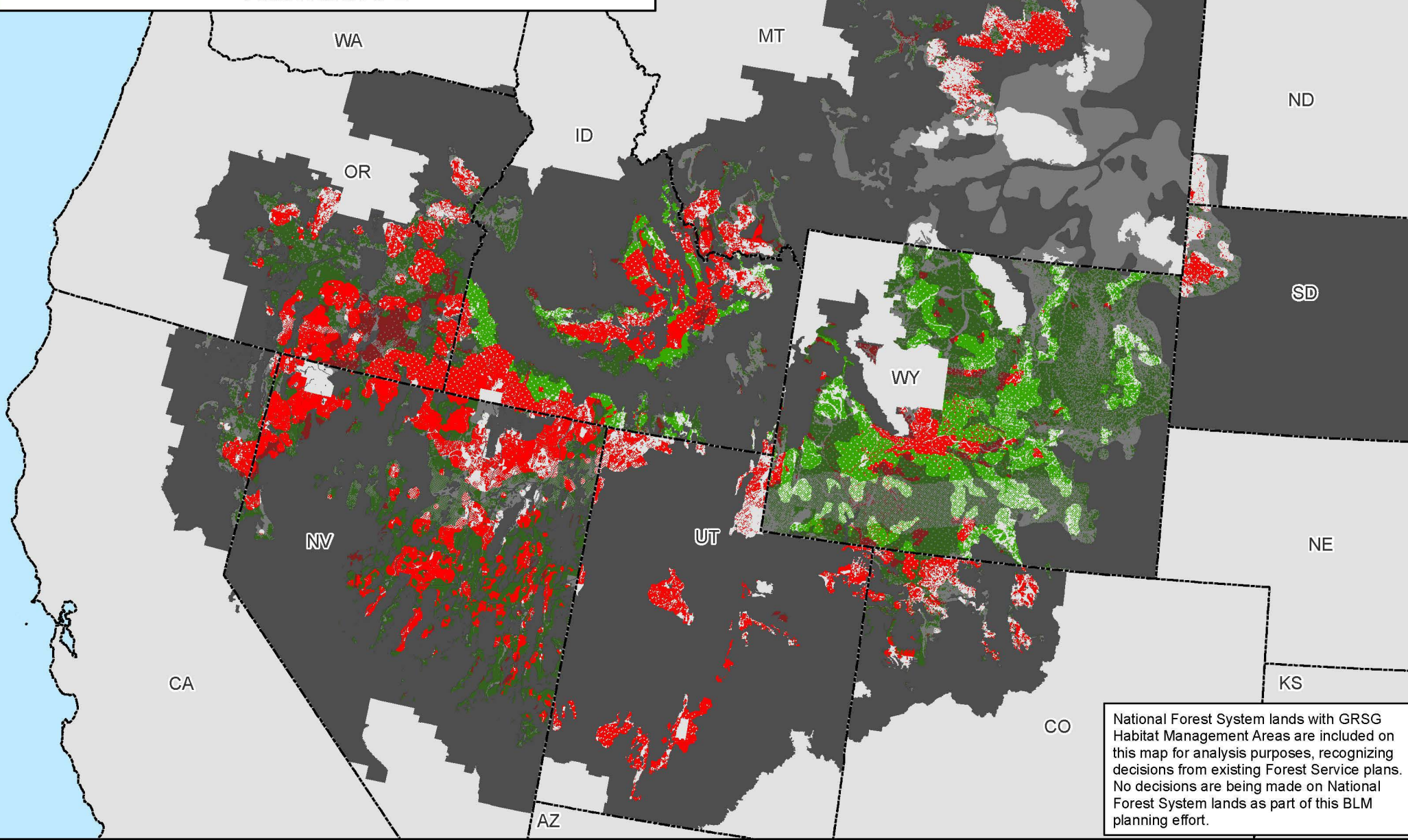
Map 2.20b



No warranty is made by the Bureau of Land Management (BLM). The accuracy, reliability, or completeness of these data for individual use or aggregate use with other data is not guaranteed.



Non-Energy Leasable Minerals and Greater Sage-Grouse Habitat Management Areas Alternative 2



National Forest System lands with GRSG Habitat Management Areas are included on this map for analysis purposes, recognizing decisions from existing Forest Service plans. No decisions are being made on National Forest System lands as part of this BLM planning effort.

Map 2.21a

PHMAs / IHMAs

GHMAs / Add'l HMAs

Non-Energy Leasable Minerals - Closed

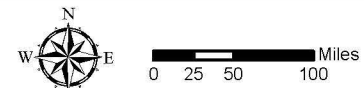
Non-Energy Leasable Minerals - Open

Non-Shaded Areas: PHMAs/IHMAs

Shaded Areas: GHMAs/Additional Habitat Mgmt Areas

Non-Habitat Management Areas in the Planning Area Extent

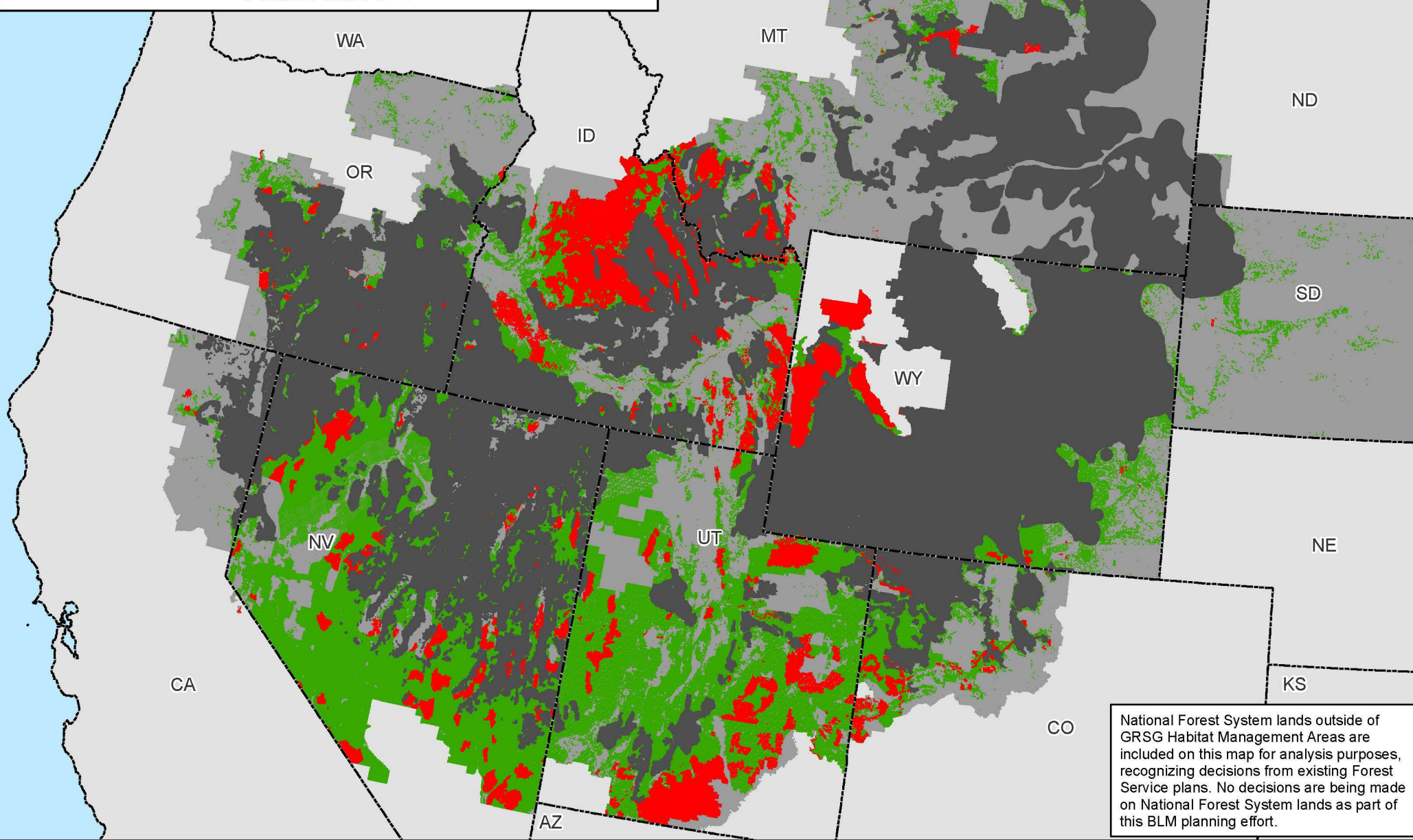
State Boundaries



No warranty is made by the Bureau of Land Management (BLM). The accuracy, reliability, or completeness of these data for individual use or aggregate use with other data is not guaranteed.



Non-Energy Leasable Minerals Outside of Greater Sage-Grouse Habitat Management Areas Alternative 2



Map 2.21b

Legend

Non-Masked Areas: Outside GRSG Habitat Management Areas

Masked Areas: Within GRSG Habitat Management Areas

Non-Energy Leasable Minerals - Closed

Non-Energy Leasable Minerals - Open

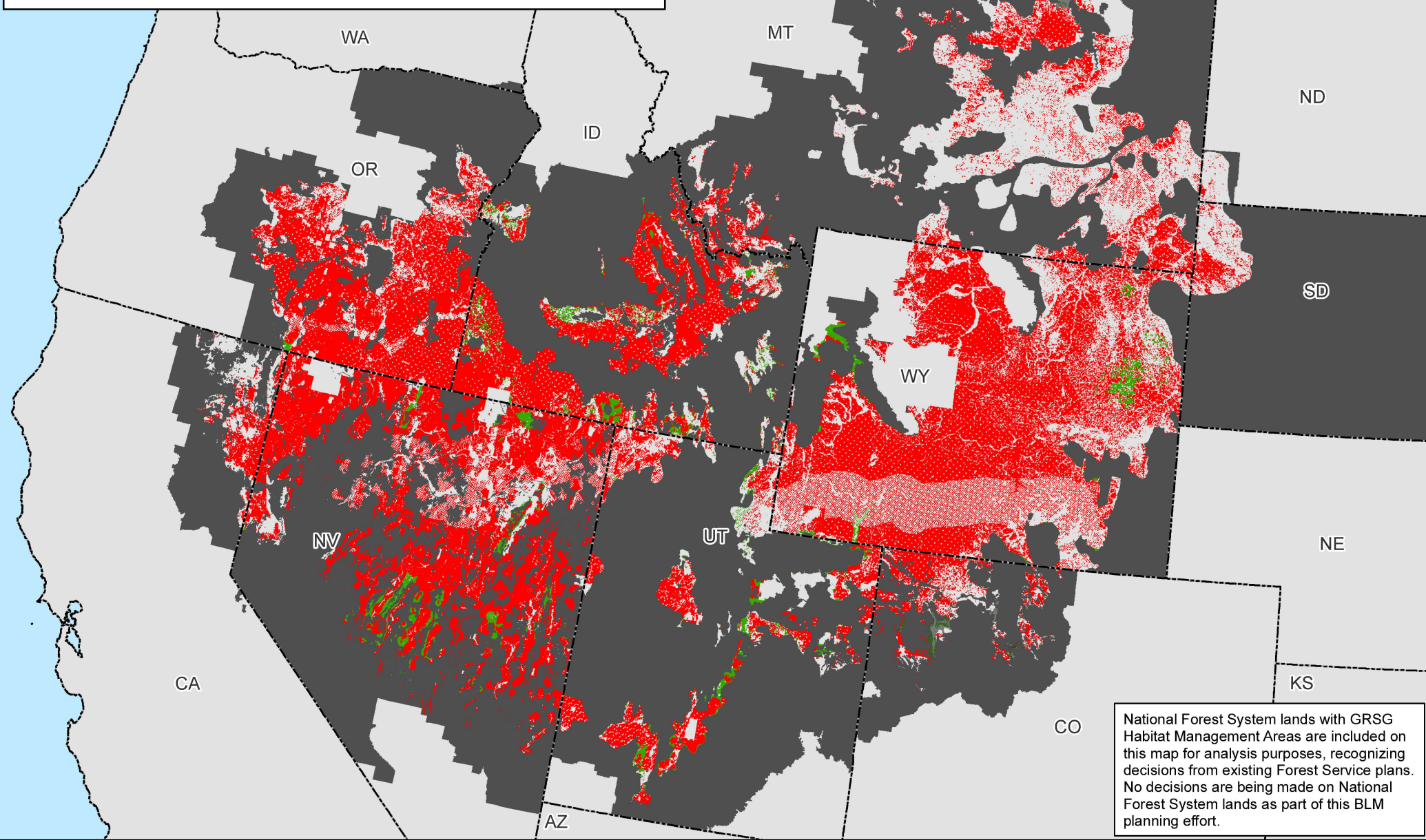
GRSG Habitat Management Areas

Planning Area Extent

State Boundaries

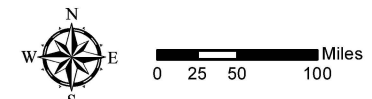
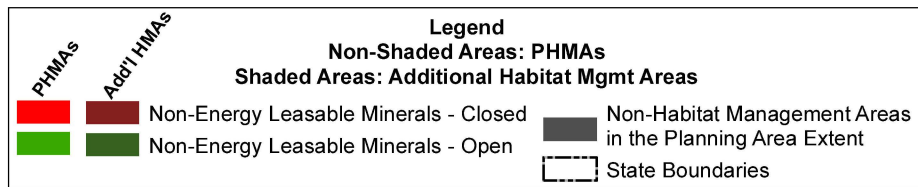
No warranty is made by the Bureau of Land Management (BLM). The accuracy, reliability, or completeness of these data for individual use or aggregate use with other data is not guaranteed.

Non-Energy Leasable Minerals and Greater Sage-Grouse Habitat Management Areas Alternative 3



National Forest System lands with GRSG Habitat Management Areas are included on this map for analysis purposes, recognizing decisions from existing Forest Service plans. No decisions are being made on National Forest System lands as part of this BLM planning effort.

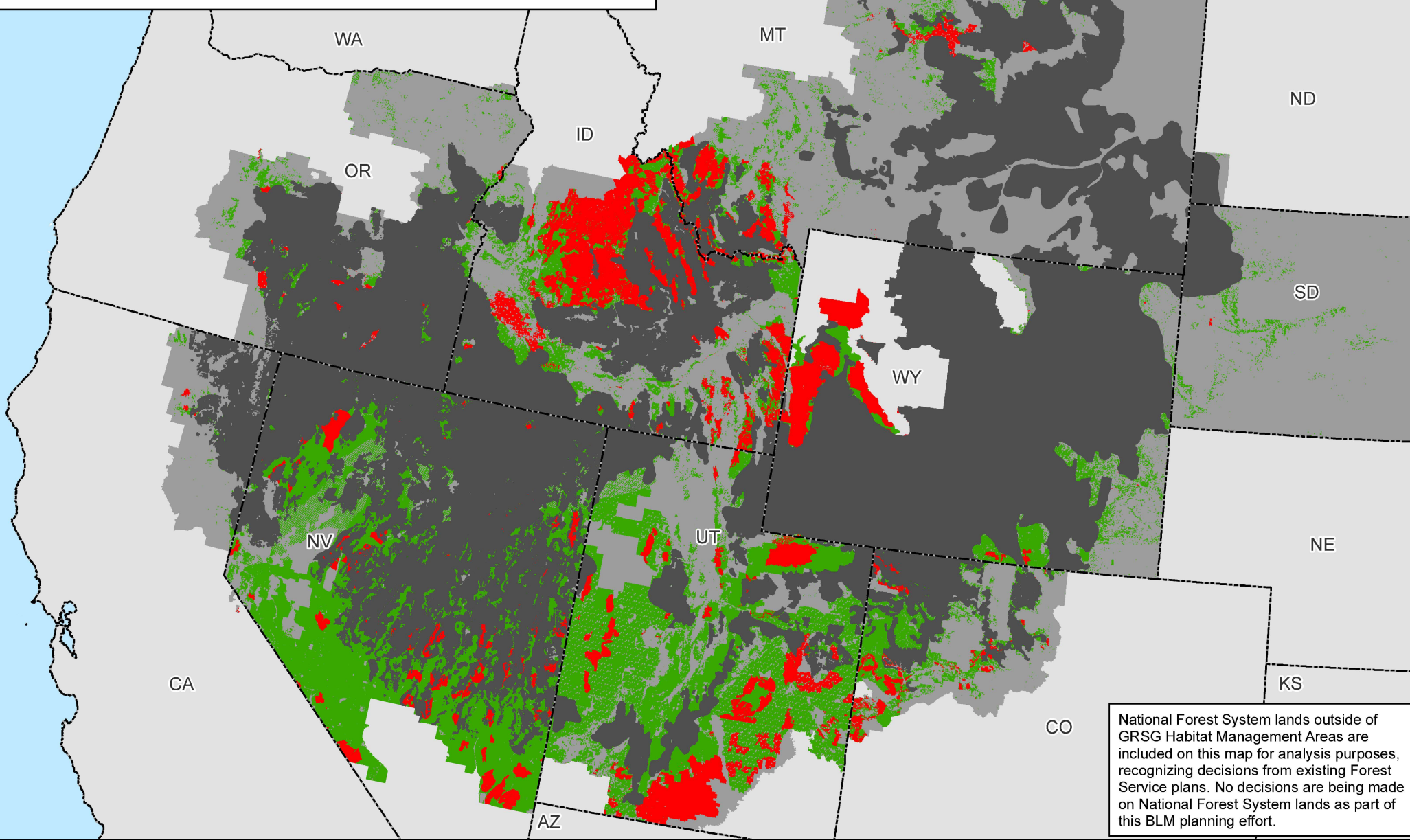
Map 2.22a



No warranty is made by the Bureau of Land Management (BLM). The accuracy, reliability, or completeness of these data for individual use or aggregate use with other data is not guaranteed.



Non-Energy Leasable Minerals Outside of Greater Sage-Grouse Habitat Management Areas Alternative 3



National Forest System lands outside of GRSG Habitat Management Areas are included on this map for analysis purposes, recognizing decisions from existing Forest Service plans. No decisions are being made on National Forest System lands as part of this BLM planning effort.

Map 2.22b

Legend

Non-Masked Areas: Outside GRSG Habitat Management Areas

Masked Areas: Within GRSG Habitat Management Areas

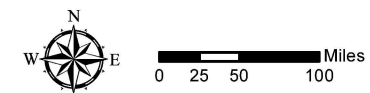
■ Non-Energy Leasable Minerals - Closed

■ Non-Energy Leasable Minerals - Open

■ GRSG Habitat Management Areas

■ Planning Area Extent

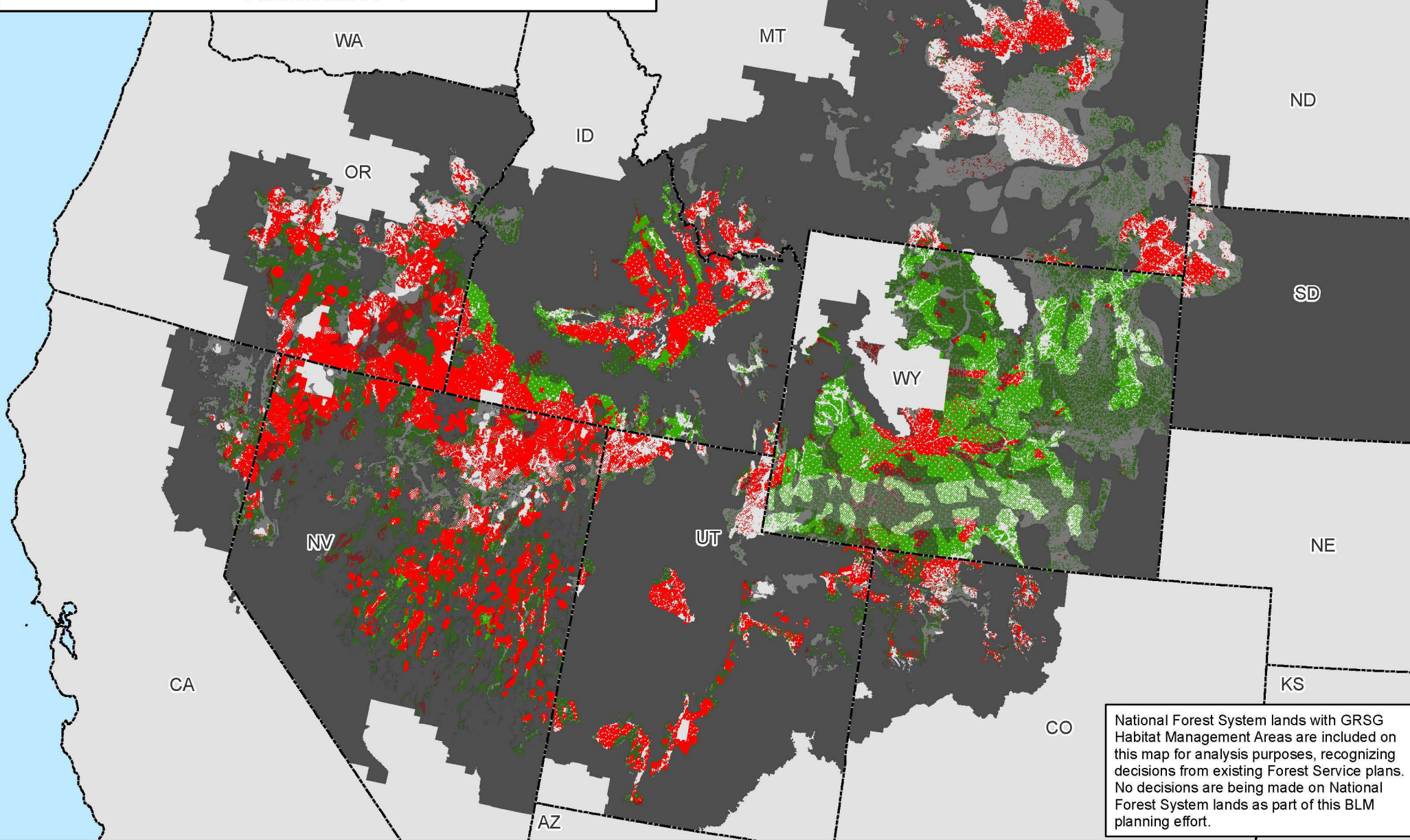
■ State Boundaries



No warranty is made by the Bureau of Land Management (BLM). The accuracy, reliability, or completeness of these data for individual use or aggregate use with other data is not guaranteed.

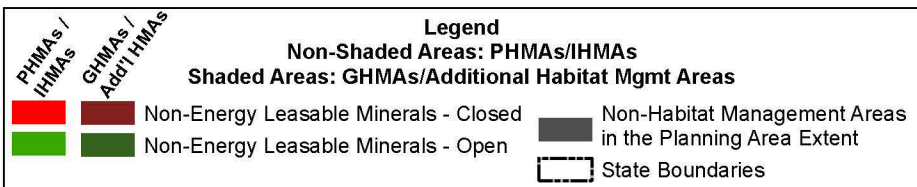


Non-Energy Leasable Minerals and Greater Sage-Grouse Habitat Management Areas Alternative 4



National Forest System lands with GRSG Habitat Management Areas are included on this map for analysis purposes, recognizing decisions from existing Forest Service plans. No decisions are being made on National Forest System lands as part of this BLM planning effort.

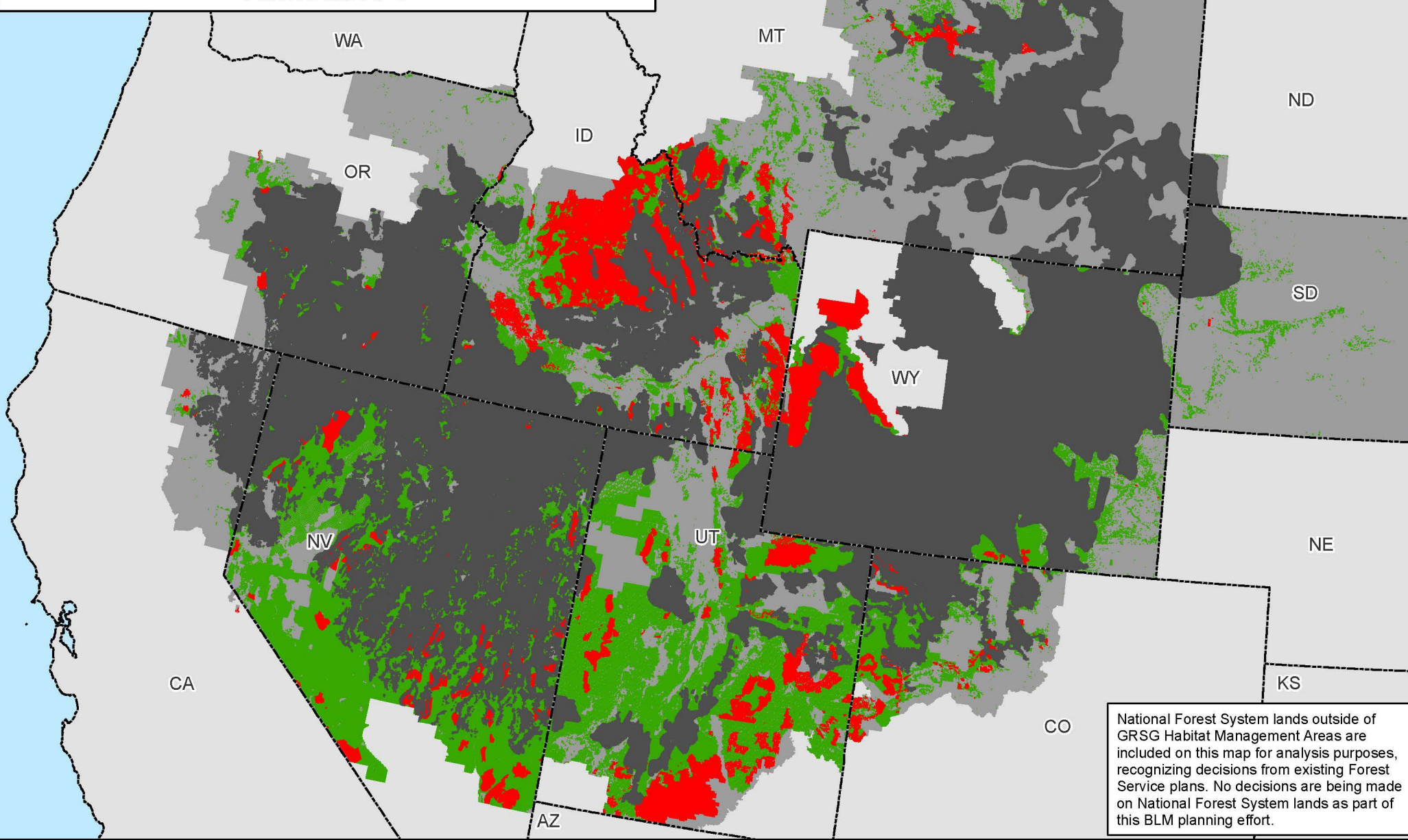
Map 2.23a



No warranty is made by the Bureau of Land Management (BLM). The accuracy, reliability, or completeness of these data for individual use or aggregate use with other data is not guaranteed.



Non-Energy Leasable Minerals Outside of Greater Sage-Grouse Habitat Management Areas Alternative 4



National Forest System lands outside of GRSG Habitat Management Areas are included on this map for analysis purposes, recognizing decisions from existing Forest Service plans. No decisions are being made on National Forest System lands as part of this BLM planning effort.

Map 2.23b

Legend

Non-Masked Areas: Outside GRSG Habitat Management Areas

Masked Areas: Within GRSG Habitat Management Areas

■ Non-Energy Leasable Minerals - Closed

■ Non-Energy Leasable Minerals - Open

■ GRSG Habitat Management Areas

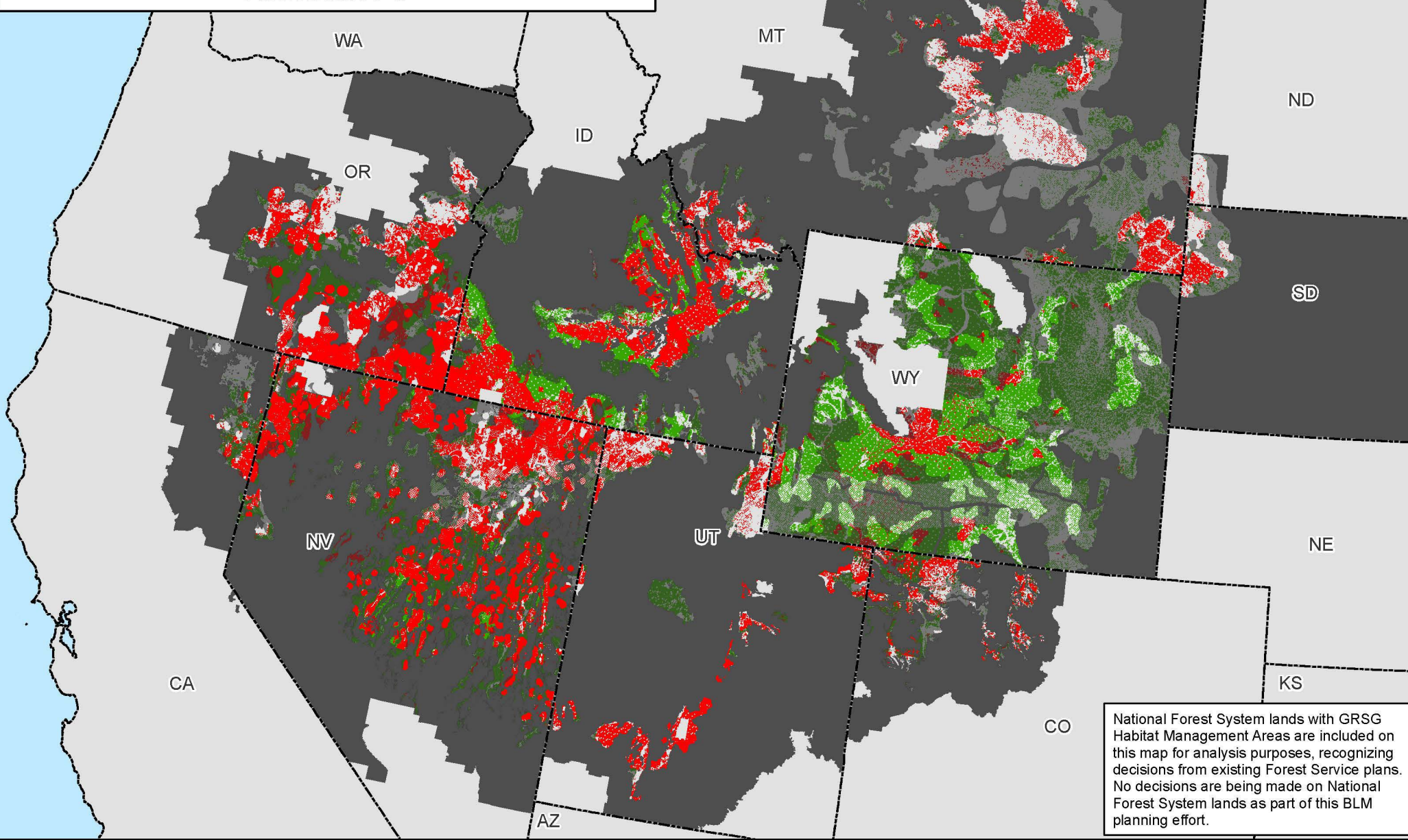
■ Planning Area Extent

 State Boundaries

No warranty is made by the Bureau of Land Management (BLM). The accuracy, reliability, or completeness of these data for individual use or aggregate use with other data is not guaranteed.

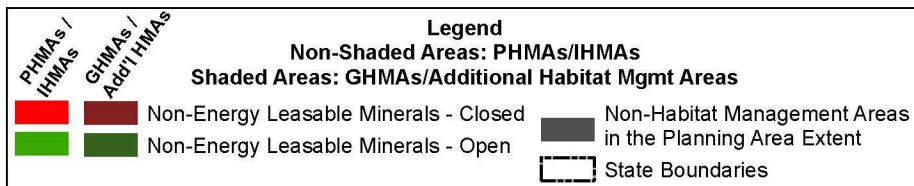


Non-Energy Leasable Minerals and Greater Sage-Grouse Habitat Management Areas Alternative 5



National Forest System lands with GRSG Habitat Management Areas are included on this map for analysis purposes, recognizing decisions from existing Forest Service plans. No decisions are being made on National Forest System lands as part of this BLM planning effort.

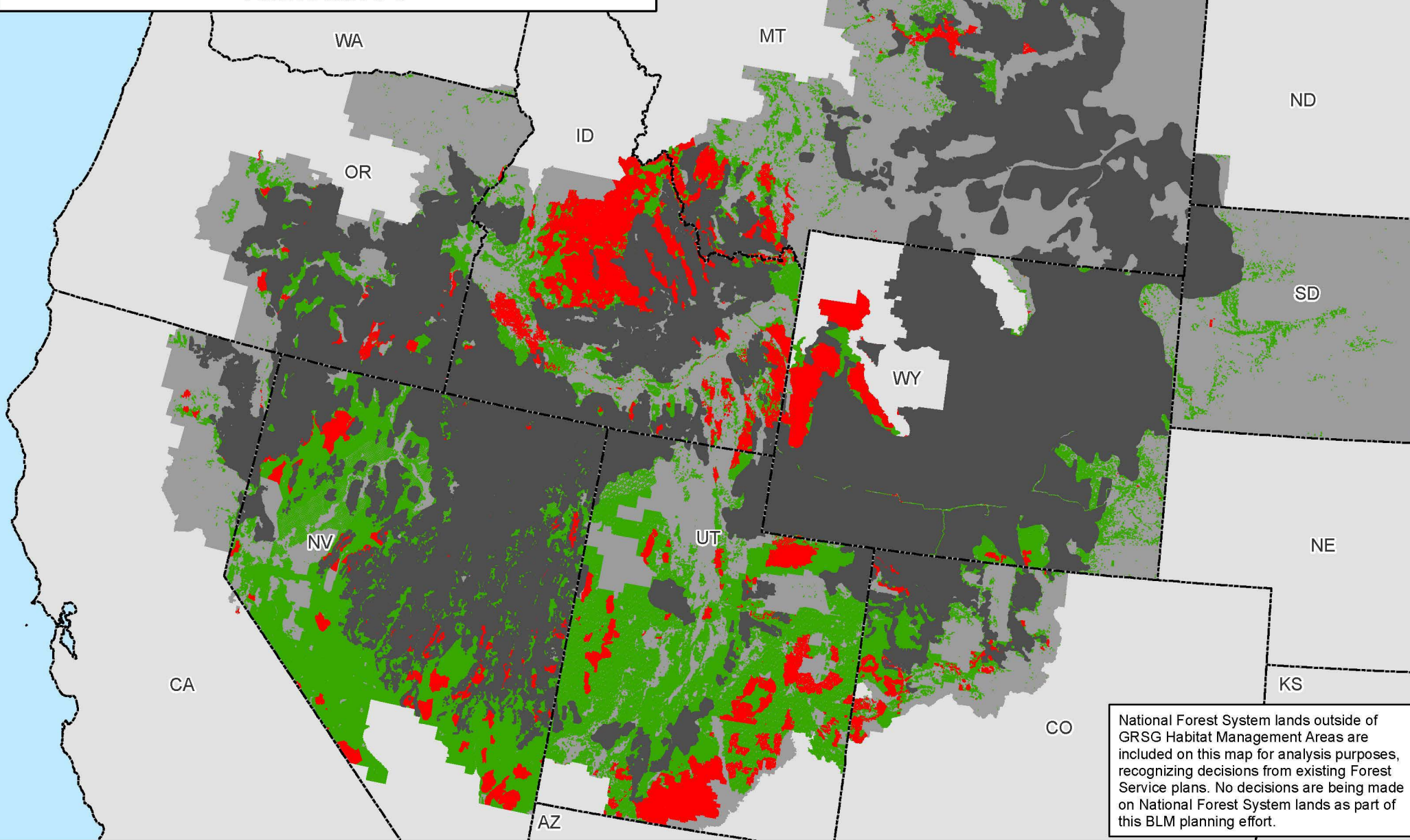
Map 2.24a



No warranty is made by the Bureau of Land Management (BLM). The accuracy, reliability, or completeness of these data for individual use or aggregate use with other data is not guaranteed.

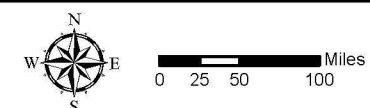
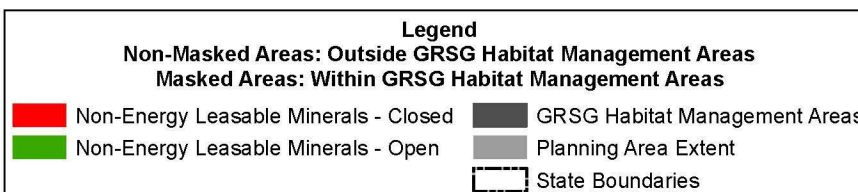


Non-Energy Leasable Minerals Outside of Greater Sage-Grouse Habitat Management Areas Alternative 5



National Forest System lands outside of GRSG Habitat Management Areas are included on this map for analysis purposes, recognizing decisions from existing Forest Service plans. No decisions are being made on National Forest System lands as part of this BLM planning effort.

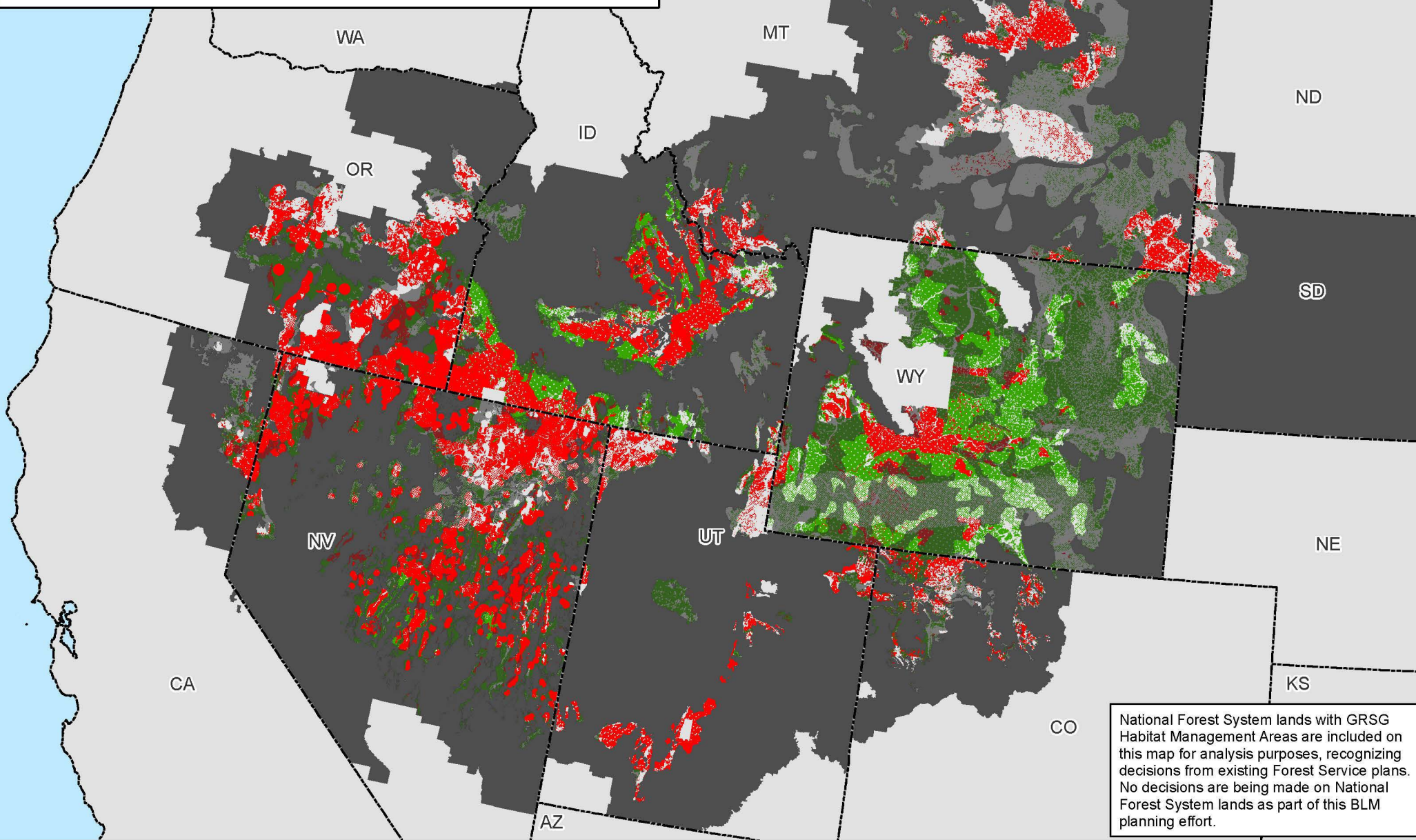
Map 2.24b



No warranty is made by the Bureau of Land Management (BLM). The accuracy, reliability, or completeness of these data for individual use or aggregate use with other data is not guaranteed.

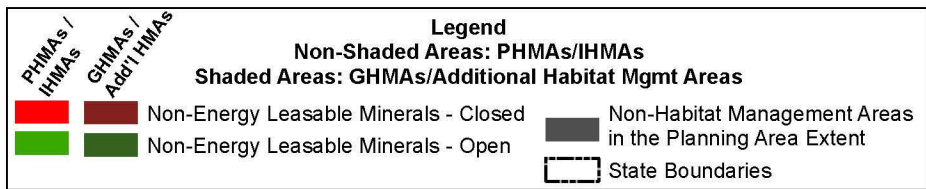


Non-Energy Leasable Minerals and Greater Sage-Grouse Habitat Management Areas Alternative 6



National Forest System lands with GRSG Habitat Management Areas are included on this map for analysis purposes, recognizing decisions from existing Forest Service plans. No decisions are being made on National Forest System lands as part of this BLM planning effort.

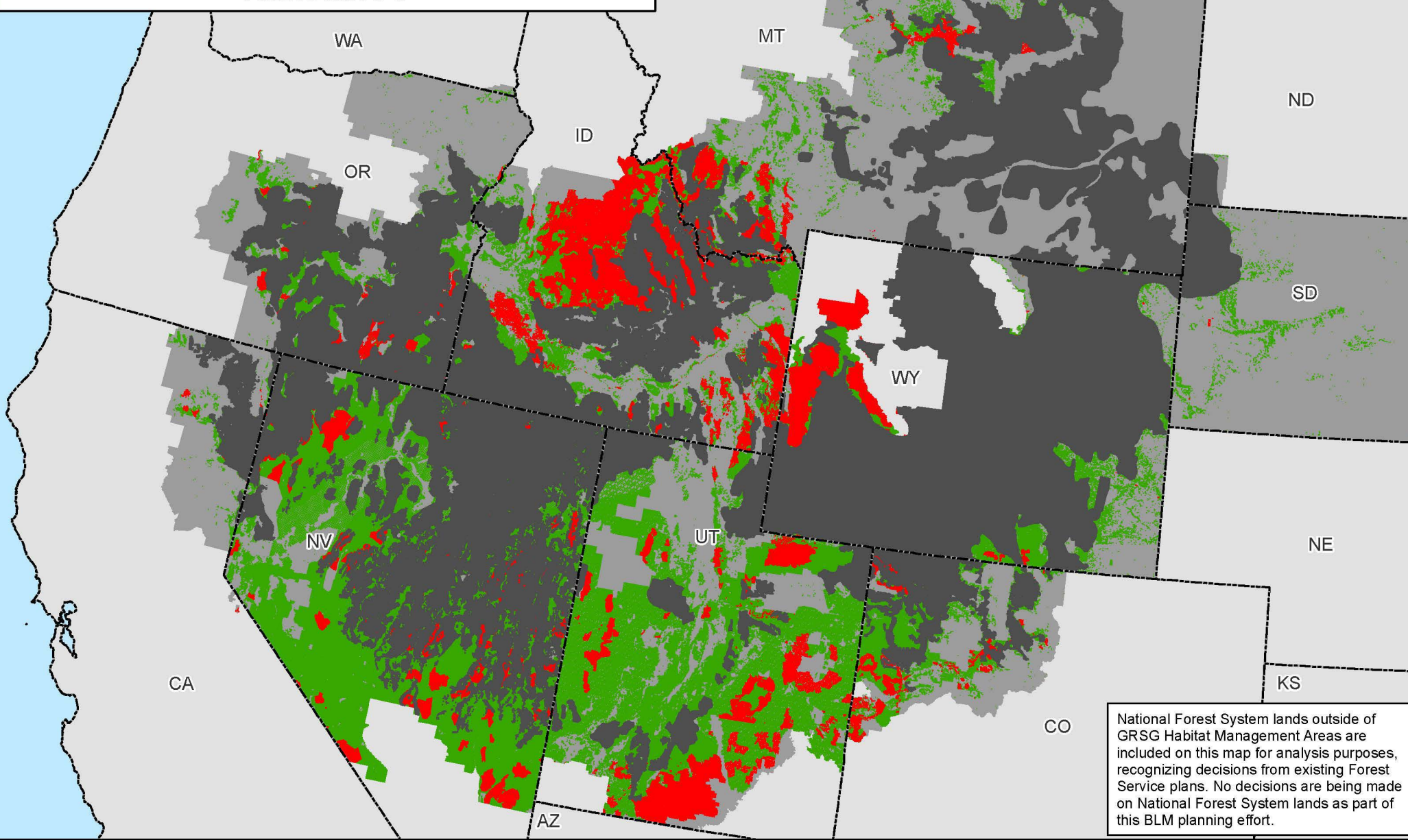
Map 2.25a



No warranty is made by the Bureau of Land Management (BLM). The accuracy, reliability, or completeness of these data for individual use or aggregate use with other data is not guaranteed.



Non-Energy Leasable Minerals Outside of Greater Sage-Grouse Habitat Management Areas Alternative 6



Map 2.25b

Legend

Non-Masked Areas: Outside GRSG Habitat Management Areas

Masked Areas: Within GRSG Habitat Management Areas

Non-Energy Leasable Minerals - Closed

Non-Energy Leasable Minerals - Open

GRSG Habitat Management Areas

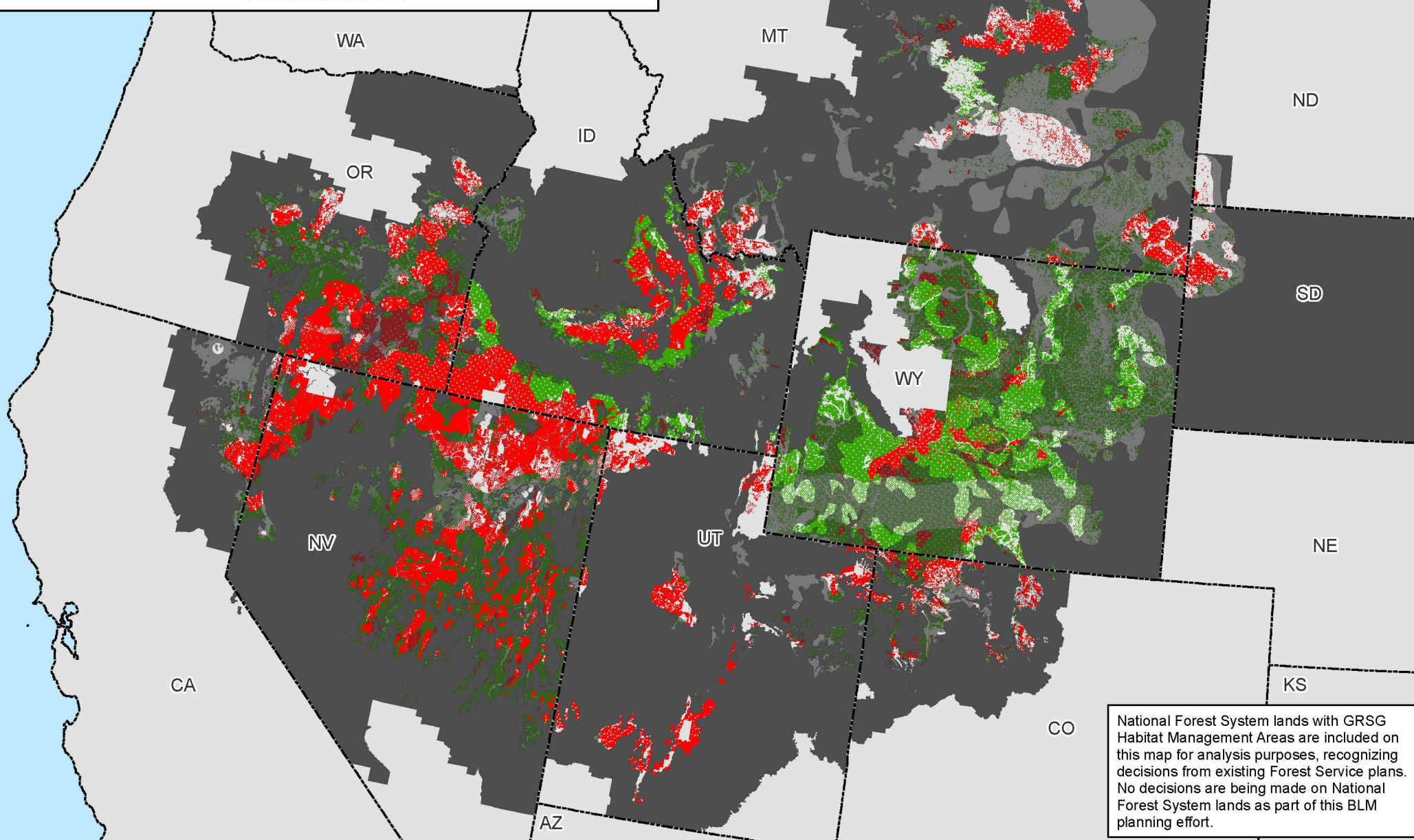
Planning Area Extent

State Boundaries

0 25 50 100 Miles

No warranty is made by the Bureau of Land Management (BLM). The accuracy, reliability, or completeness of these data for individual use or aggregate use with other data is not guaranteed.

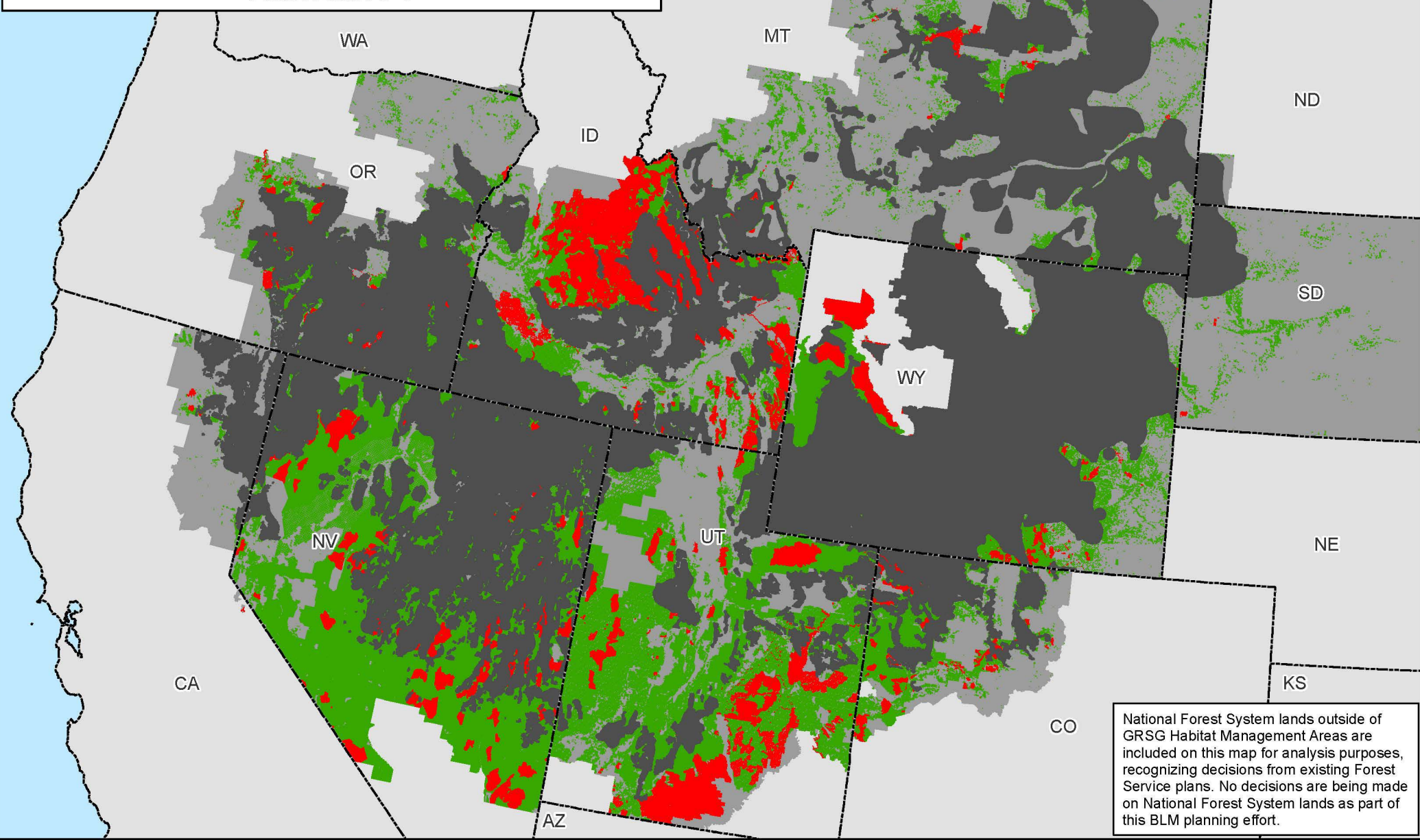
Salable (Mineral Materials) and Greater Sage-Grouse Habitat Management Areas Alternative 1



Map 2.26a



Salable (Mineral Materials) Outside of Greater Sage-Grouse Habitat Management Areas Alternative 1



National Forest System lands outside of GRSG Habitat Management Areas are included on this map for analysis purposes, recognizing decisions from existing Forest Service plans. No decisions are being made on National Forest System lands as part of this BLM planning effort.

Map 2.26b

Legend

Non-Masked Areas: Outside GRSG Habitat Management Areas

Masked Areas: Within GRSG Habitat Management Areas

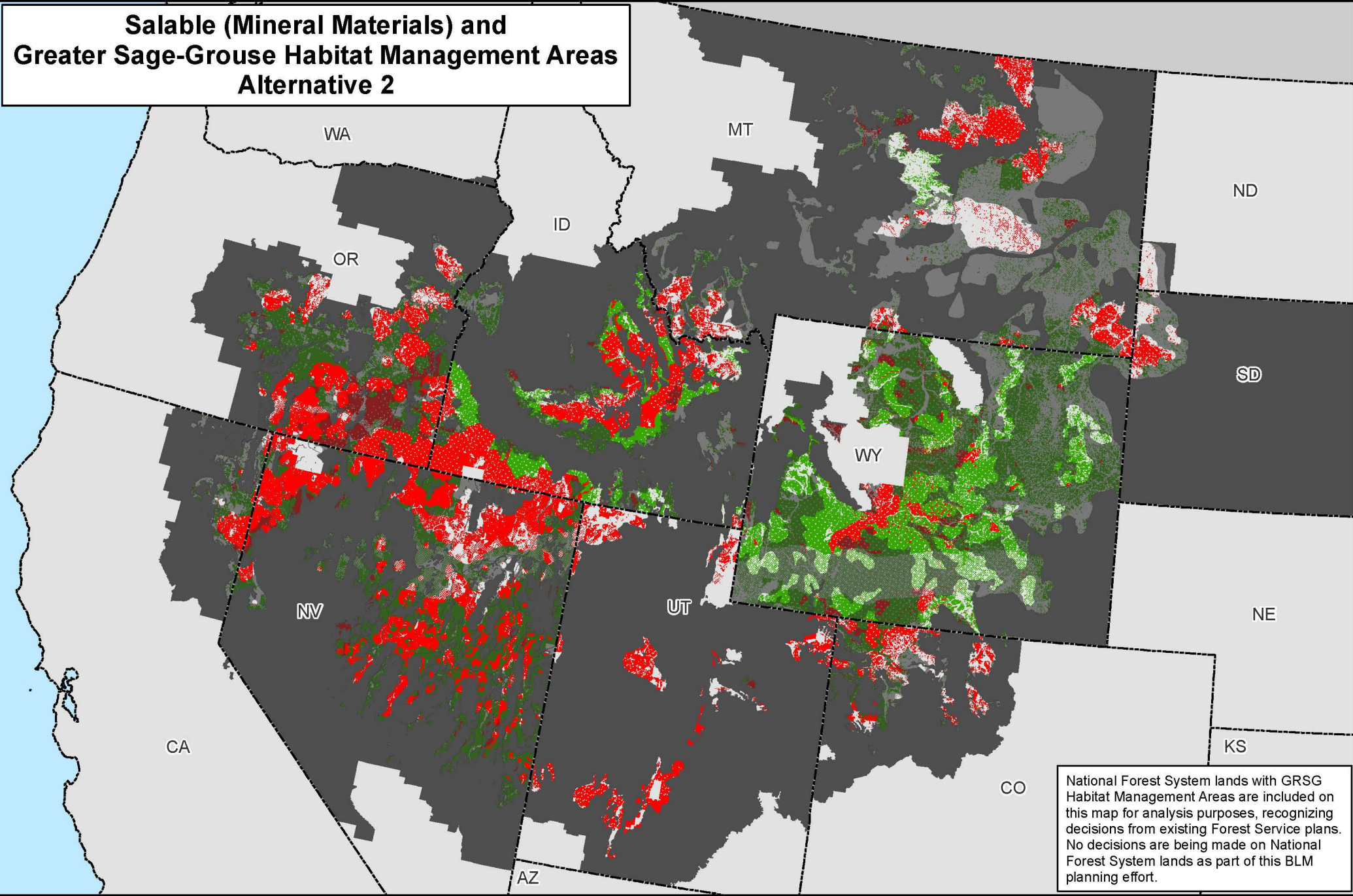
■ Salable (Mineral Materials) - Closed	■ GRSG Habitat Management Areas
■ Salable (Mineral Materials) - Open	■ Planning Area Extent
	 State Boundaries



No warranty is made by the Bureau of Land Management (BLM). The accuracy, reliability, or completeness of these data for individual use or aggregate use with other data is not guaranteed.



Salable (Mineral Materials) and Greater Sage-Grouse Habitat Management Areas Alternative 2



National Forest System lands with GRSG Habitat Management Areas are included on this map for analysis purposes, recognizing decisions from existing Forest Service plans. No decisions are being made on National Forest System lands as part of this BLM planning effort.

Map 2.27a

PHMAs / IHMAs

GHMAs / Add'l HMAs

Legend

Non-Shaded Areas: PHMAs/IHMAs

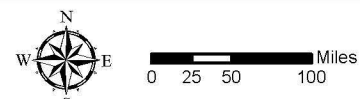
Shaded Areas: GHMAs/Additional Habitat Mgmt Areas

Salable (Mineral Materials) - Closed

Salable (Mineral Materials) - Open

Non-Habitat Management Areas in the Planning Area Extent

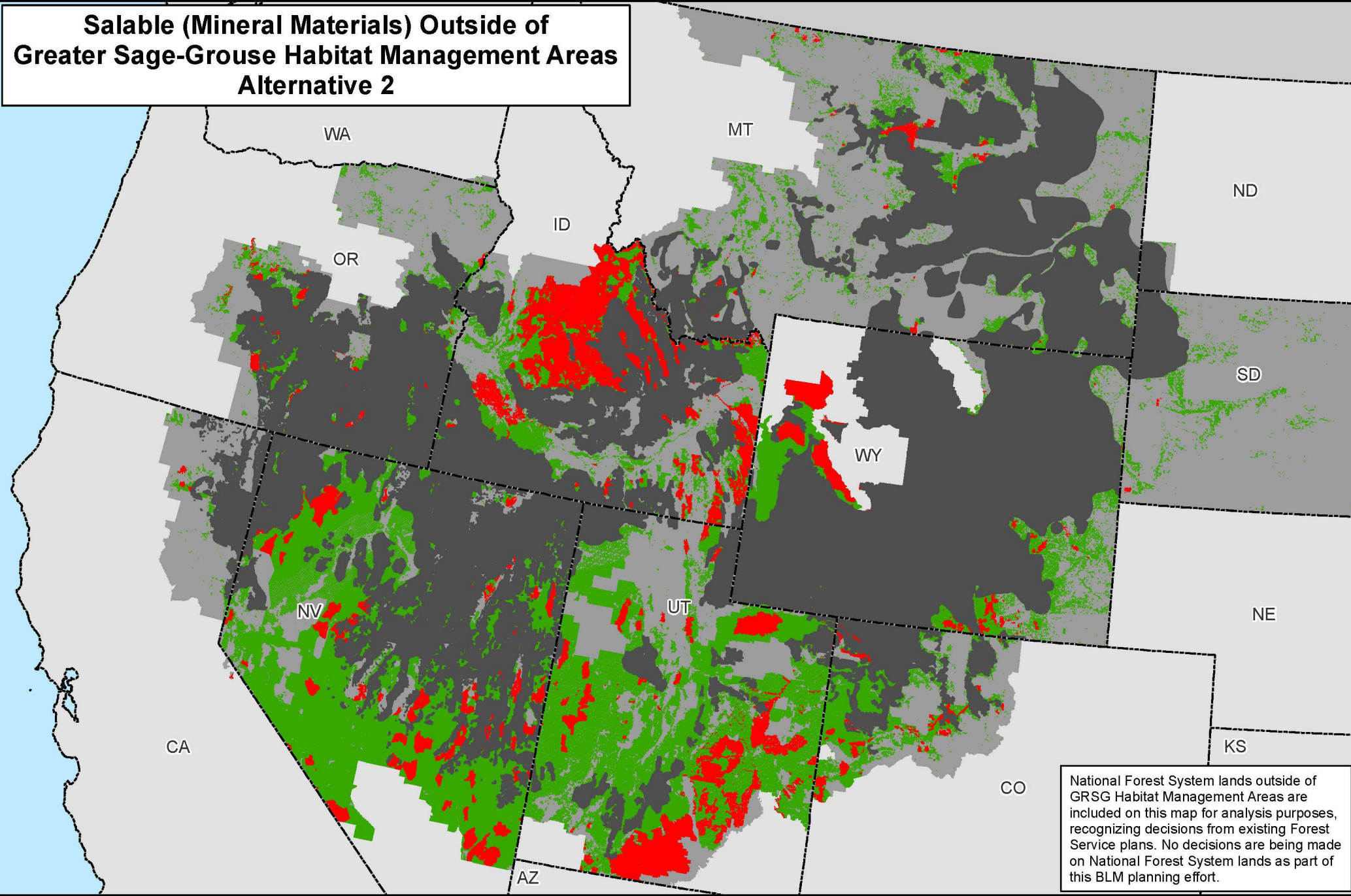
State Boundaries



No warranty is made by the Bureau of Land Management (BLM). The accuracy, reliability, or completeness of these data for individual use or aggregate use with other data is not guaranteed.



Salable (Mineral Materials) Outside of Greater Sage-Grouse Habitat Management Areas Alternative 2



Map 2.27b

Legend

Non-Masked Areas: Outside GRSG Habitat Management Areas
Masked Areas: Within GRSG Habitat Management Areas

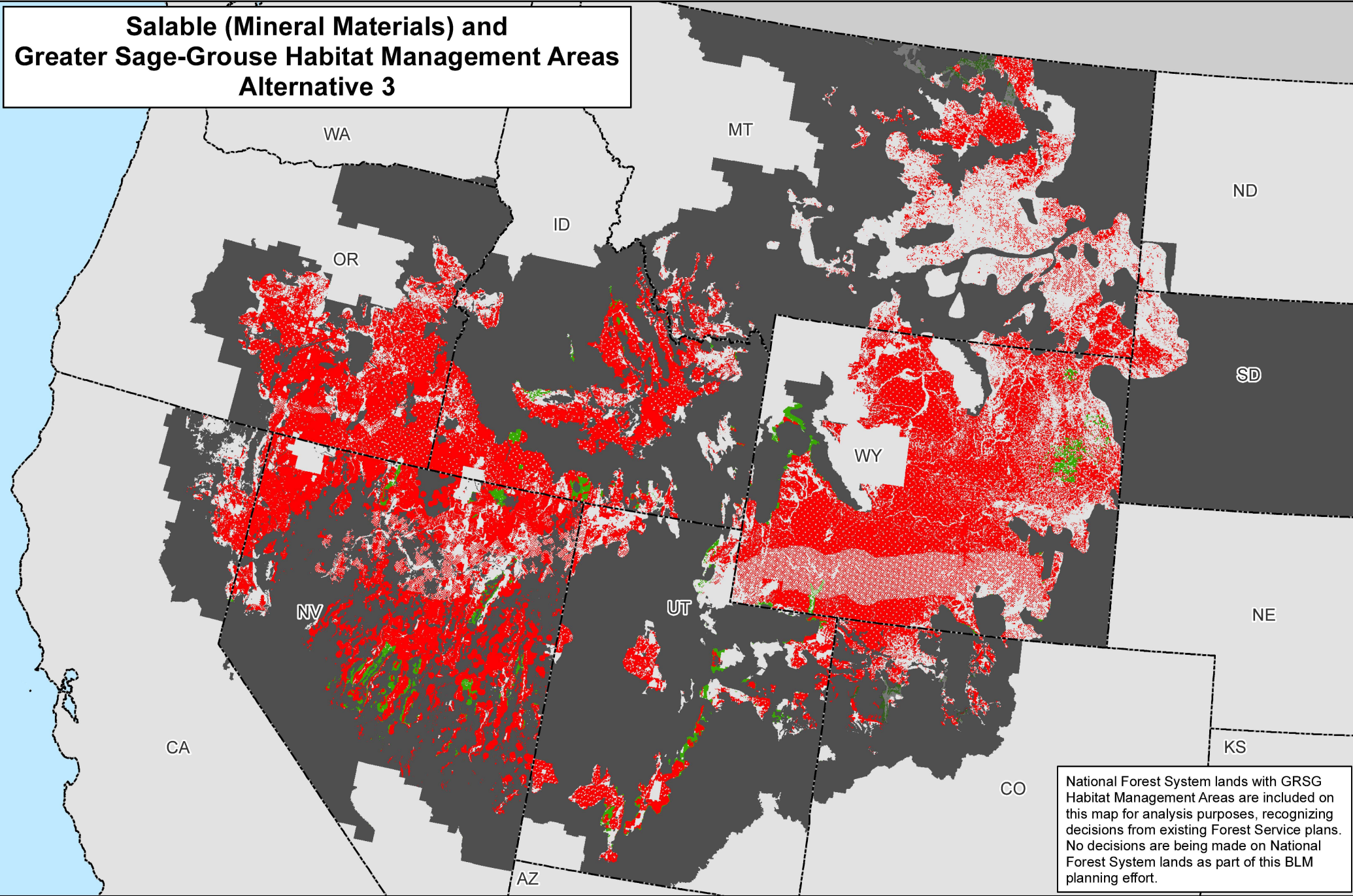
■ Salable (Mineral Materials) - Closed	■ GRSG Habitat Management Areas
■ Salable (Mineral Materials) - Open	■ Planning Area Extent
	 State Boundaries



No warranty is made by the Bureau of Land Management (BLM). The accuracy, reliability, or completeness of these data for individual use or aggregate use with other data is not guaranteed.



Salable (Mineral Materials) and Greater Sage-Grouse Habitat Management Areas Alternative 3



National Forest System lands with GRSG Habitat Management Areas are included on this map for analysis purposes, recognizing decisions from existing Forest Service plans. No decisions are being made on National Forest System lands as part of this BLM planning effort.

Map 2.28a

PHMAs

Adtri HMAs

Salable (Mineral Materials) - Closed

Salable (Mineral Materials) - Open

Non-Shaded Areas: PHMAs

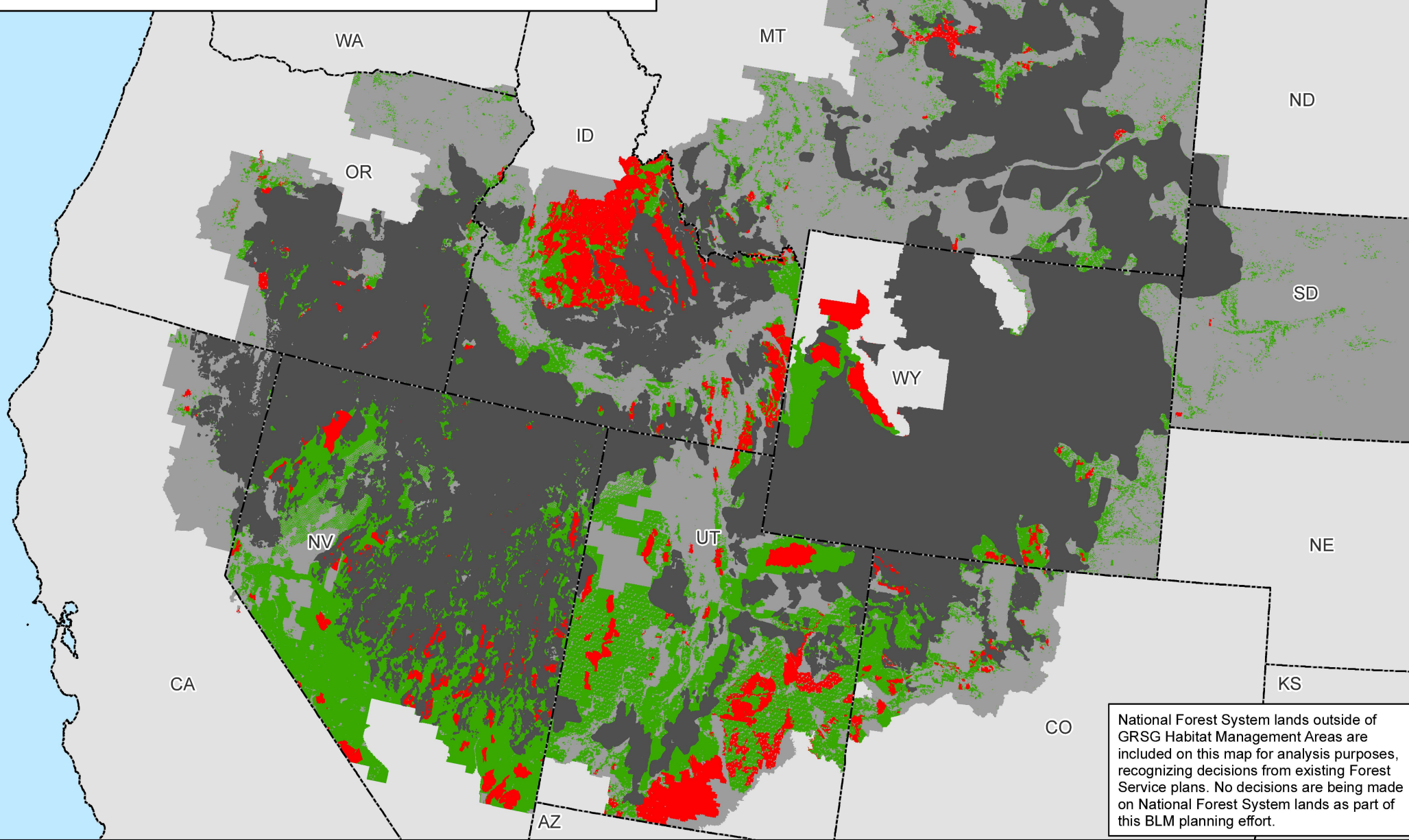
Shaded Areas: Additional Habitat Mgmt Areas

Non-Habitat Management Areas in the Planning Area Extent

State Boundaries

No warranty is made by the Bureau of Land Management (BLM). The accuracy, reliability, or completeness of these data for individual use or aggregate use with other data is not guaranteed.

Salable (Mineral Materials) Outside of Greater Sage-Grouse Habitat Management Areas Alternative 3



Map 2.28b

Legend

Non-Masked Areas: Outside GRSG Habitat Management Areas

Masked Areas: Within GRSG Habitat Management Areas

Salable (Mineral Materials) - Closed

Salable (Mineral Materials) - Open

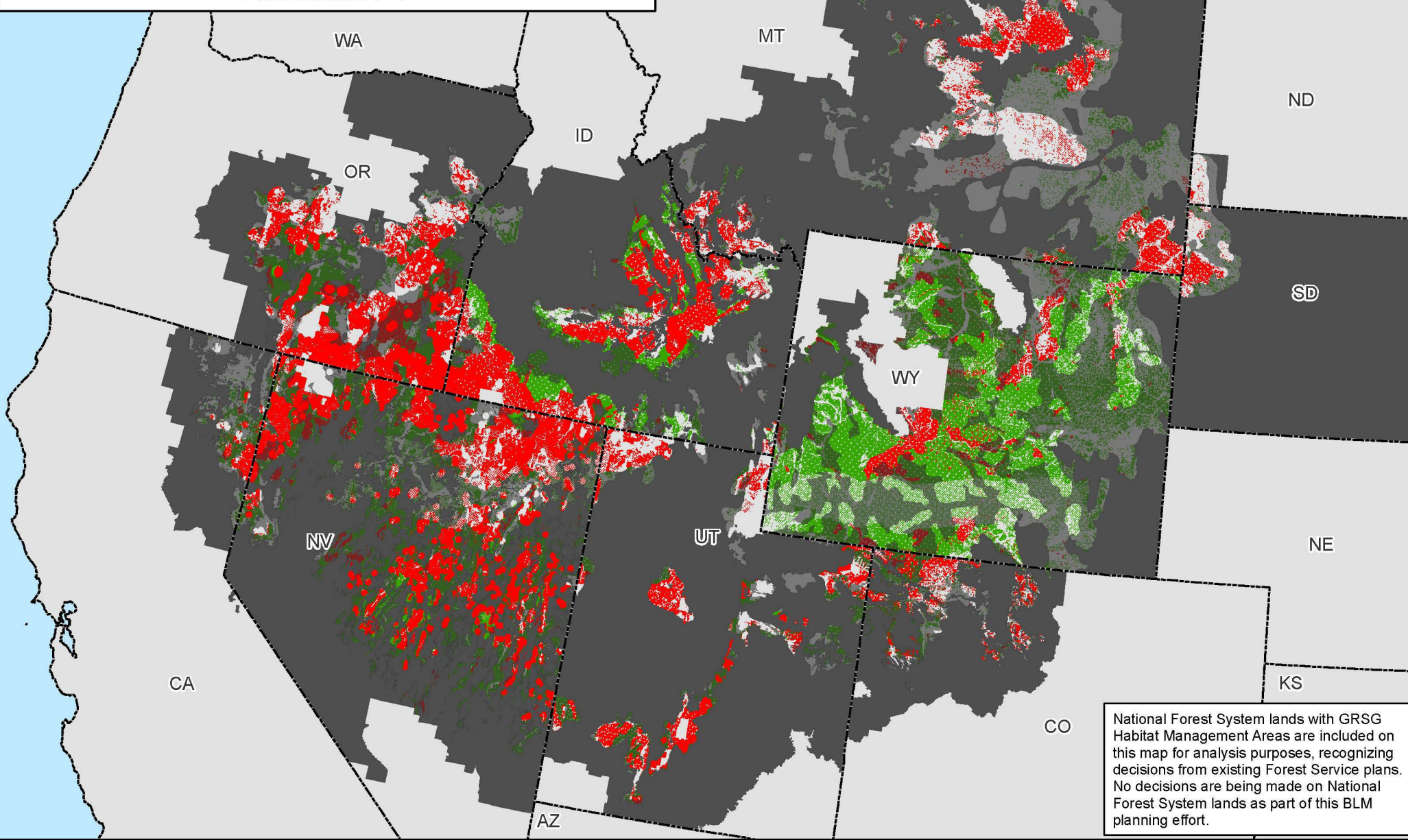
GRSG Habitat Management Areas

Planning Area Extent

State Boundaries

No warranty is made by the Bureau of Land Management (BLM). The accuracy, reliability, or completeness of these data for individual use or aggregate use with other data is not guaranteed.

Salable (Mineral Materials) and Greater Sage-Grouse Habitat Management Areas Alternative 4



National Forest System lands with GRSG Habitat Management Areas are included on this map for analysis purposes, recognizing decisions from existing Forest Service plans. No decisions are being made on National Forest System lands as part of this BLM planning effort.

Map 2.29a

PHMAs / IHMAs

GHMAs / Add'l HMAs

Legend

Non-Shaded Areas: PHMAs/IHMAs

Shaded Areas: GHMAs/Additional Habitat Mgmt Areas

Salable (Mineral Materials) - Closed

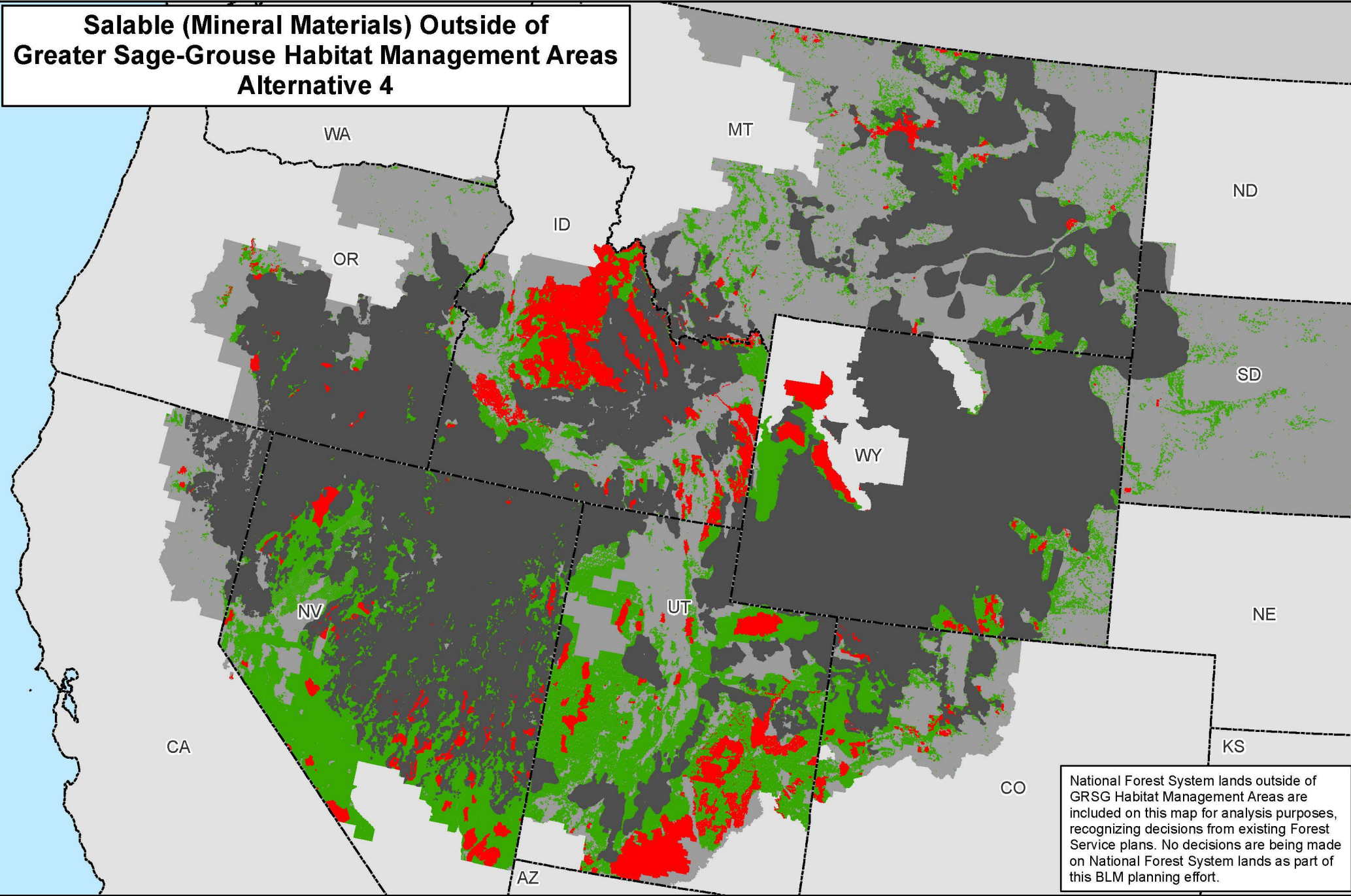
Salable (Mineral Materials) - Open

Non-Habitat Management Areas in the Planning Area Extent

State Boundaries

No warranty is made by the Bureau of Land Management (BLM). The accuracy, reliability, or completeness of these data for individual use or aggregate use with other data is not guaranteed.

Salable (Mineral Materials) Outside of Greater Sage-Grouse Habitat Management Areas Alternative 4



National Forest System lands outside of GRSG Habitat Management Areas are included on this map for analysis purposes, recognizing decisions from existing Forest Service plans. No decisions are being made on National Forest System lands as part of this BLM planning effort.

Map 2.29b

Legend

Non-Masked Areas: Outside GRSG Habitat Management Areas
Masked Areas: Within GRSG Habitat Management Areas

- Salable (Mineral Materials) - Closed
- Salable (Mineral Materials) - Open
- GRSG Habitat Management Areas
- Planning Area Extent
- State Boundaries

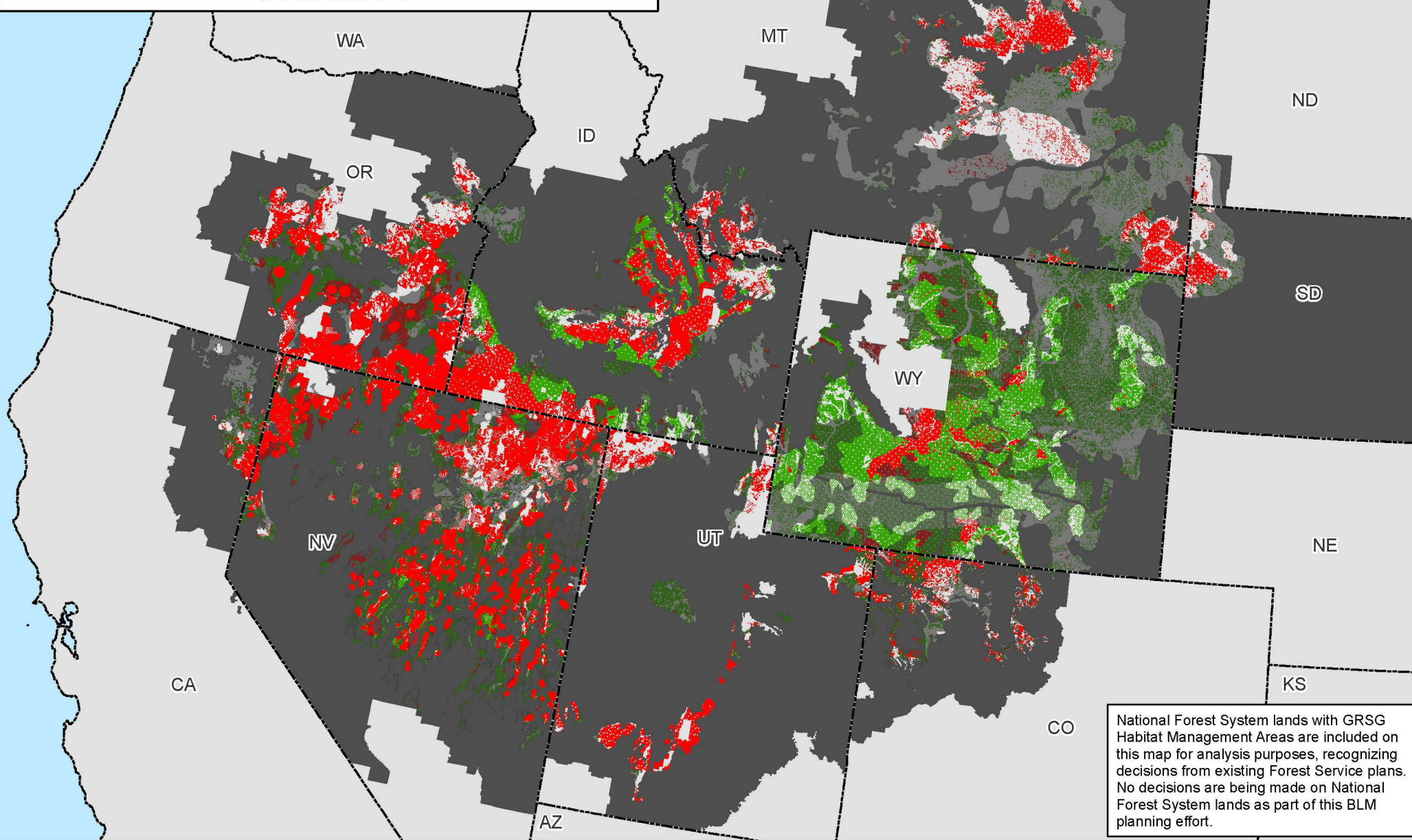


0 25 50 100 Miles

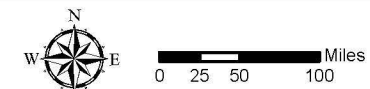
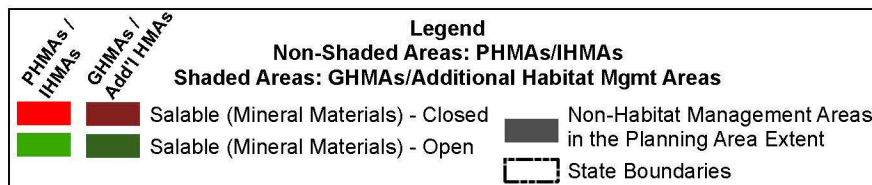
No warranty is made by the Bureau of Land Management (BLM). The accuracy, reliability, or completeness of these data for individual use or aggregate use with other data is not guaranteed.



Salable (Mineral Materials) and Greater Sage-Grouse Habitat Management Areas Alternative 5

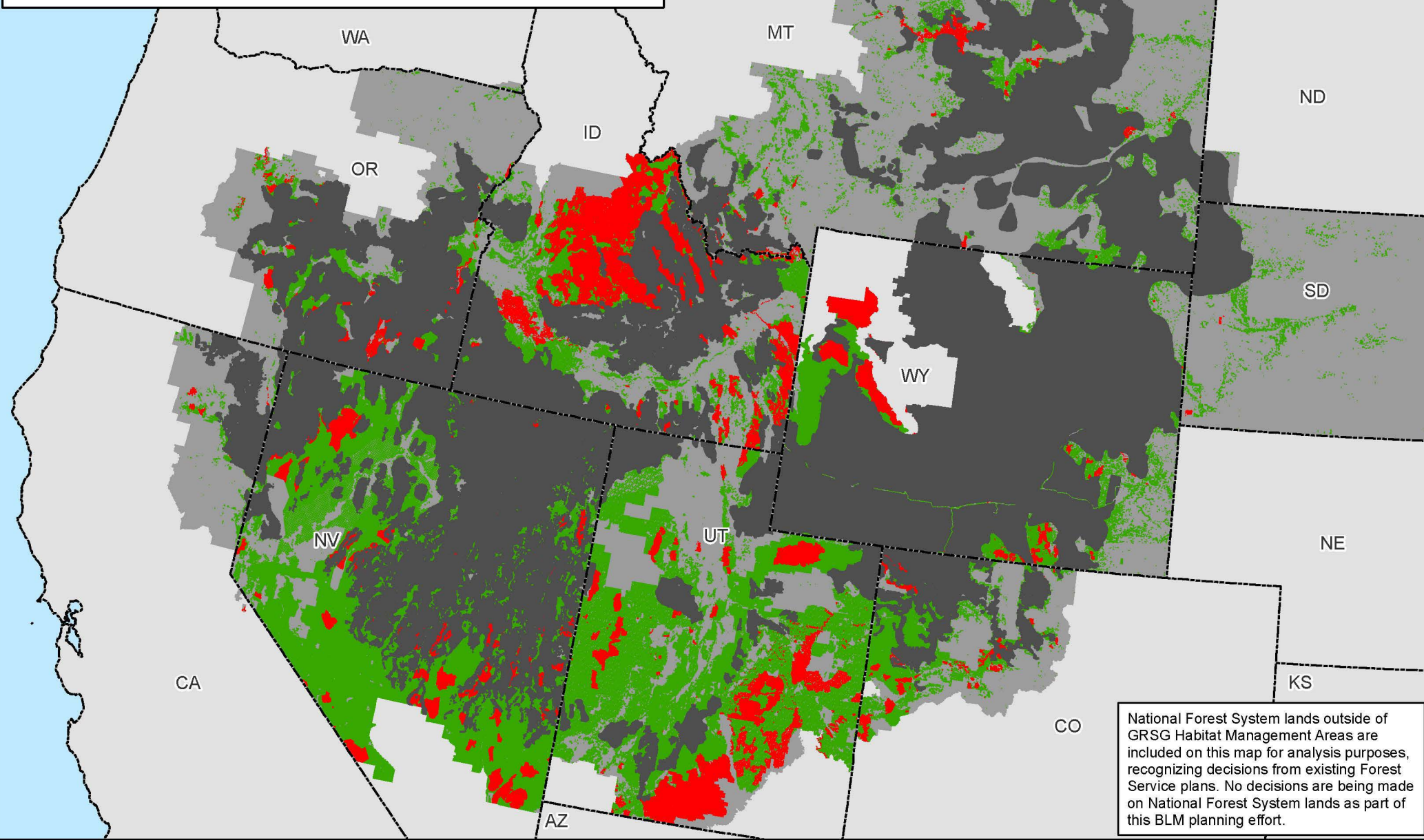


Map 2.30a



No warranty is made by the Bureau of Land Management (BLM). The accuracy, reliability, or completeness of these data for individual use or aggregate use with other data is not guaranteed.

Salable (Mineral Materials) Outside of Greater Sage-Grouse Habitat Management Areas Alternative 5



Map 2.30b

Legend

Non-Masked Areas: Outside GRSG Habitat Management Areas

Masked Areas: Within GRSG Habitat Management Areas

Salable (Mineral Materials) - Closed

Salable (Mineral Materials) - Open

GRSG Habitat Management Areas

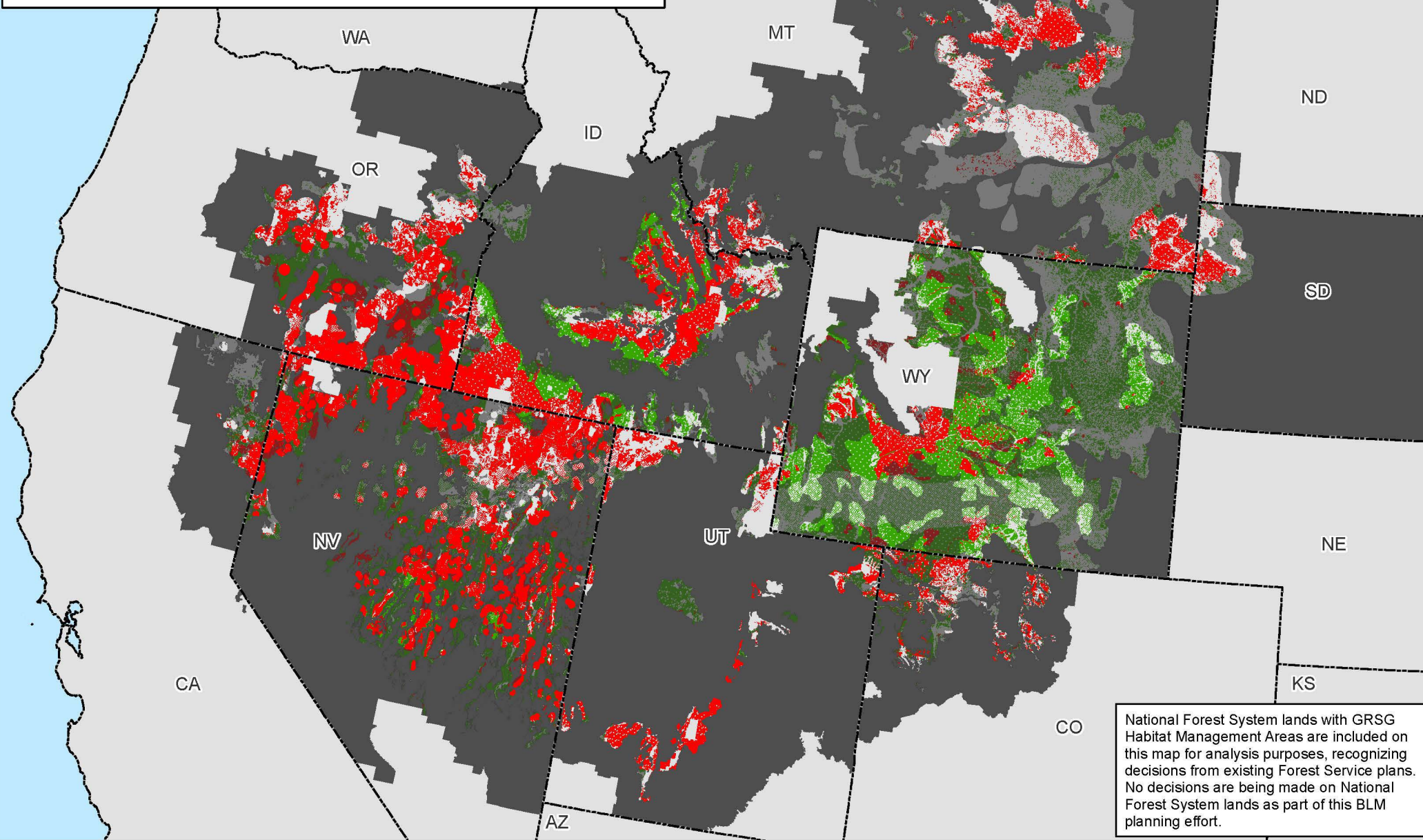
Planning Area Extent

State Boundaries

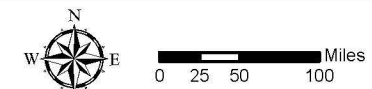
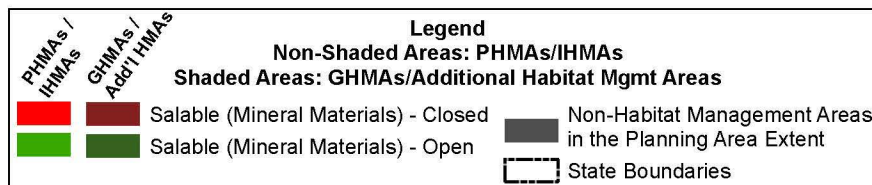
No warranty is made by the Bureau of Land Management (BLM). The accuracy, reliability, or completeness of these data for individual use or aggregate use with other data is not guaranteed.



Salable (Mineral Materials) and Greater Sage-Grouse Habitat Management Areas Alternative 6

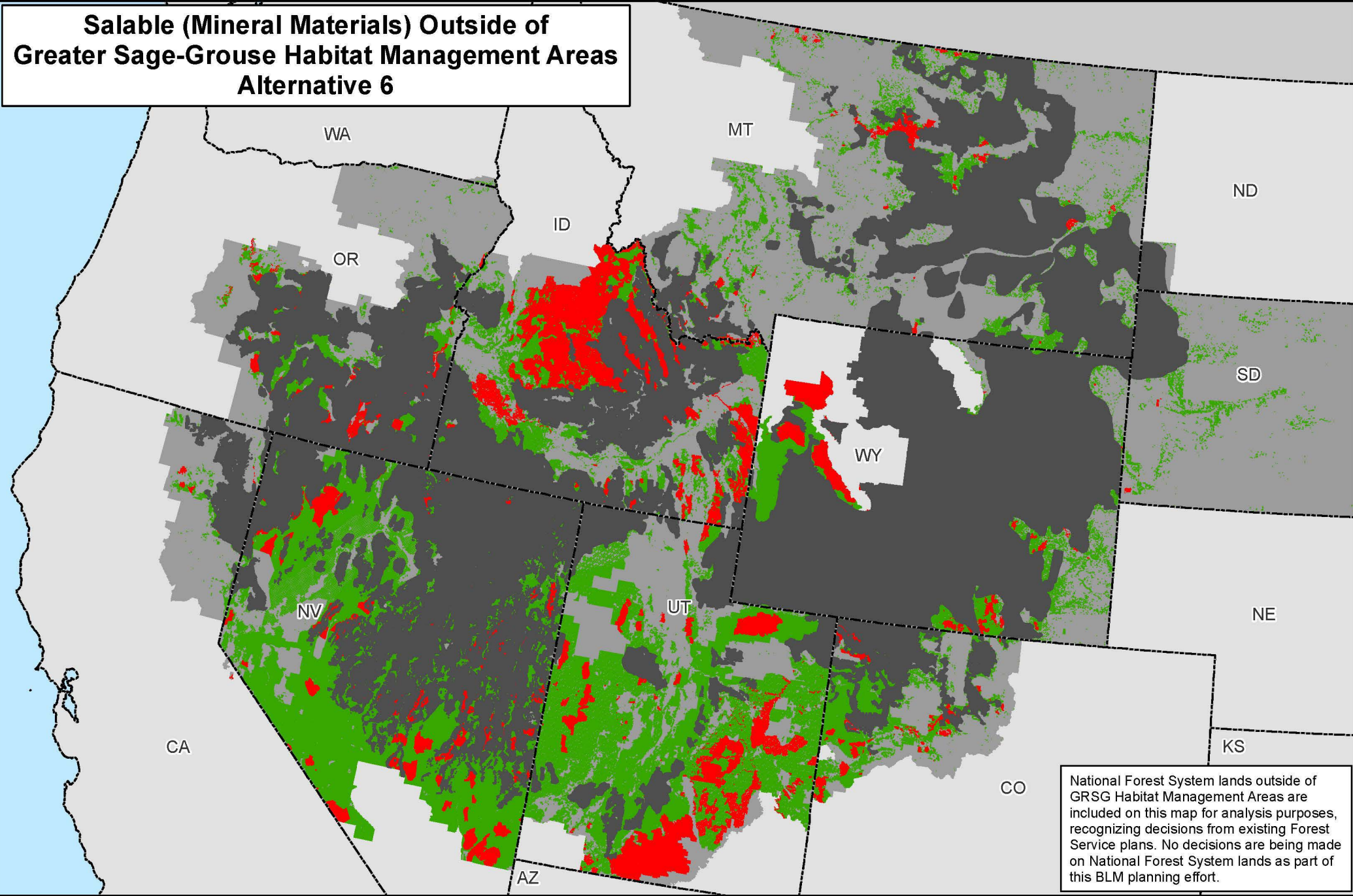


Map 2.31a



No warranty is made by the Bureau of Land Management (BLM). The accuracy, reliability, or completeness of these data for individual use or aggregate use with other data is not guaranteed.

Salable (Mineral Materials) Outside of Greater Sage-Grouse Habitat Management Areas Alternative 6



Map 2.31b

Legend

Non-Masked Areas: Outside GRSG Habitat Management Areas

Masked Areas: Within GRSG Habitat Management Areas

Salable (Mineral Materials) - Closed

Salable (Mineral Materials) - Open

GRSG Habitat Management Areas

Planning Area Extent

State Boundaries



No warranty is made by the Bureau of Land Management (BLM). The accuracy, reliability, or completeness of these data for individual use or aggregate use with other data is not guaranteed.

